

## GPR31 antibody [HL4702]

**Cat. No. GTX644703**

<b>Host</b>	Rabbit
<b>Clonality</b>	Monoclonal
<b>Isotype</b>	IgG
<b>Applications</b>	WB, ICC/IF
<b>Reactivity</b>	Human

**Package**  
100 µl, 25 µl

## Applications

**Application Note**

\*Optimal dilutions/concentrations should be determined by the researcher.

Suggested dilution	Recommended dilution
WB	1:1000-1:10000
ICC/IF	Assay dependent

Not tested in other applications.

**Product Note** This antibody was raised against human GPR31 Intracellular domain.

## Properties

<b>Form</b>	Liquid
<b>Buffer</b>	PBS
<b>Preservative</b>	No preservatives
<b>Storage</b>	Store as concentrated solution. Centrifuge briefly prior to opening vial. For short-term storage (1-2 weeks), store at 4°C. For long-term storage, aliquot and store at -20°C or below. Avoid multiple freeze-thaw cycles.
<b>Concentration</b>	1 mg/ml (Please refer to the vial label for the specific concentration.)
<b>Immunogen</b>	Synthetic peptide encompassing a sequence within the Intracellular domain of human GPR31. The exact sequence is proprietary.
<b>Purification</b>	Affinity purified by Protein A.
<b>Conjugation</b>	Unconjugated

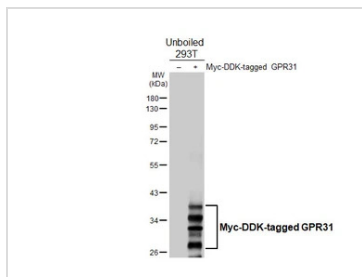
**Note** For laboratory research use only. Not for any clinical, therapeutic, or diagnostic use in humans or animals. Not for animal or human consumption.

Purchasers shall not, and agree not to enable third parties to, analyze, copy, reverse engineer or otherwise attempt to determine the structure or sequence of the product.



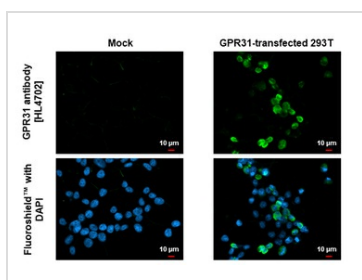
For full product information, images and publications, please visit our [website](#).

DATA IMAGES



**GTX644703 WB Image**

Non-transfected (-) and transfected (+) unboiled 293T whole cell extracts (30 µg) were separated by 10% SDS-PAGE, and the membrane was blotted with GPR31 Antibody [HL4702] (GTX644703) diluted at 1:5000. The HRP-conjugated anti-rabbit IgG antibody (GTX213110-01) was used to detect the primary antibody.



**GTX644703 ICC/IF Image**

GPR31 antibody [HL4702] detects GPR31 protein by immunofluorescent analysis. Sample: Mock and transfected 293T cells were fixed in ice-cold MeOH for 5 min. Green: GPR31 stained by GPR31 antibody [HL4702] (GTX644703) diluted at 1:500. Blue: Fluoroshield with DAPI (GTX30920).



For full product information, images and publications, please visit our [website](#).