

GPR126 antibody [HL4744]

Cat. No. GTX644748

Host	Rabbit
Clonality	Monoclonal
Isotype	IgG
Applications	WB
Reactivity	Human

Package
100 µl, 25 µl

Applications

Application Note

*Optimal dilutions/concentrations should be determined by the researcher.

Suggested dilution	Recommended dilution
--------------------	----------------------

WB	1:500-1:3000
----	--------------

Not tested in other applications.

Observed MW (kDa) > 180 kDa.

Product Note This antibody was raised against human GPR126 Intracellular domain.

Properties

Form Liquid

Buffer PBS

Preservative No preservatives

Storage Store as concentrated solution. Centrifuge briefly prior to opening vial. For short-term storage (1-2 weeks), store at 4°C. For long-term storage, aliquot and store at -20°C or below. Avoid multiple freeze-thaw cycles.

Concentration 1 mg/ml (Please refer to the vial label for the specific concentration.)

Immunogen Synthetic peptide encompassing a sequence within the Intracellular domain of human GPR126. The exact sequence is proprietary.

Purification Affinity purified by Protein A.

Conjugation Unconjugated

Note

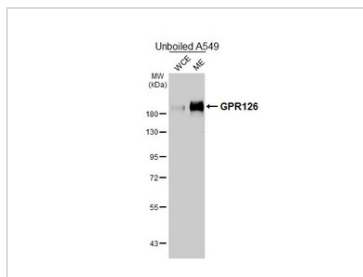
For laboratory research use only. Not for any clinical, therapeutic, or diagnostic use in humans or animals. Not for animal or human consumption.

Purchasers shall not, and agree not to enable third parties to, analyze, copy, reverse engineer or otherwise attempt to determine the structure or sequence of the product.



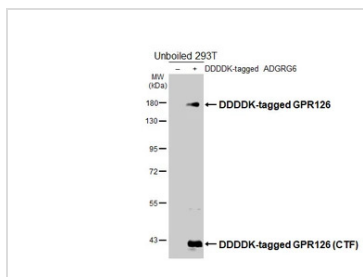
For full product information, images and publications, please visit our [website](#).

DATA IMAGES



GTX644748 WB Image

Unboiled A549 whole cell and membrane extracts (30 µg) were separated by 7.5% SDS-PAGE, and the membrane was blotted with GPR126 antibody [HL4744] (GTX644748) diluted at 1:1000. The HRP-conjugated anti-rabbit IgG antibody (GTX213110-01) was used to detect the primary antibody. (WCE: whole cell extract; ME: membrane extract)



GTX644748 WB Image

Non-transfected (-) and transfected (+) unboiled 293T whole cell extracts (30 µg) were separated by 7.5% SDS-PAGE, and the membrane was blotted with GPR126 antibody [HL4744] (GTX644748) diluted at 1:5000. The HRP-conjugated anti-rabbit IgG antibody (GTX213110-01) was used to detect the primary antibody.



For full product information, images and publications, please visit our [website](#).