

Claudin 18.2 antibody [HL5024]

Cat. No. GTX645117

Host	Rabbit
Clonality	Monoclonal
Isotype	IgG
Applications	IHC-P, IHC-P (cell pellet)
Reactivity	Human, Mouse

Package
100 µl, 25 µl

Applications

Application Note

*Optimal dilutions/concentrations should be determined by the researcher.

Suggested dilution	Recommended dilution
IHC-P	1:100-1:1000
IHC-P (cell pellet)	Assay dependent

Not tested in other applications.

Properties

Form	Liquid
Buffer	PBS
Preservative	No preservatives
Storage	Store as concentrated solution. Centrifuge briefly prior to opening vial. For short-term storage (1-2 weeks), store at 4°C. For long-term storage, aliquot and store at -20°C or below. Avoid multiple freeze-thaw cycles.
Concentration	1 mg/ml (Please refer to the vial label for the specific concentration.)
Immunogen	Recombinant feagment of human Claudin 18.2.
Purification	Affinity purified by Protein A.
Conjugation	Unconjugated

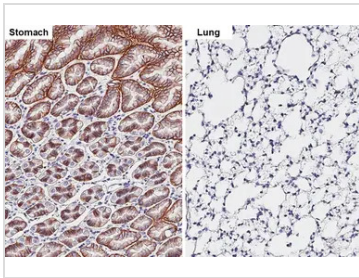
Note

For laboratory research use only. Not for any clinical, therapeutic, or diagnostic use in humans or animals. Not for animal or human consumption.

Purchasers shall not, and agree not to enable third parties to, analyze, copy, reverse engineer or otherwise attempt to determine the structure or sequence of the product.



For full product information, images and publications, please visit our [website](#).

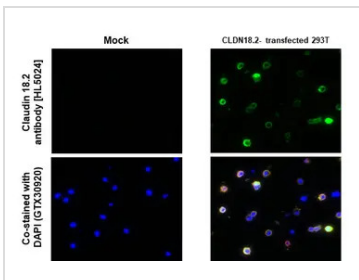
DATA IMAGES

GTX645117 IHC-P Image

Claudin 18.2 antibody [HL5024] detects Claudin 18.2 protein by immunohistochemical analysis.

Sample: Paraffin-embedded mouse tissues.

Claudin 18.2 stained by Claudin 18.2 antibody [HL5024] (GTX645117) diluted at 1:1000.

Antigen Retrieval: Tris-EDTA buffer, pH 9.0, 15 min


GTX645117 IHC-P (cell pellet) Image

Claudin 18.2 antibody [HL5024] detects Claudin 18.2 protein by immunohistochemical analysis.

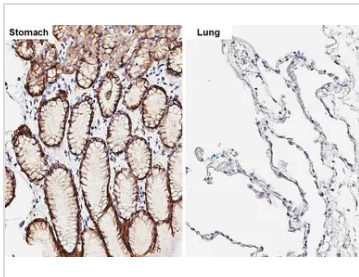
Sample: Paraffin-embedded transfected 293T cell FFPE Cell Pellet Blocks.

Green: Claudin 18.2 stained by Claudin 18.2 antibody [HL5024] (GTX645117) diluted at 1:1000.

Red: DDDDK tag antibody [GT1216] (GTX636630) diluted at 1:1000.

Blue: Fluoroshield with DAPI (GTX30920).

Antigen Retrieval: Citrate buffer, pH 6.0, 15 min


GTX645117 IHC-P Image

Claudin 18.2 antibody [HL5024] detects Claudin 18.2 protein by immunohistochemical analysis.

Sample: Paraffin-embedded human tissues.

Claudin 18 stained by Claudin 18.2 antibody [HL5024] (GTX645117) diluted at 1:1000.

Antigen Retrieval: Tris-EDTA buffer, pH 9.0, 15 min



For full product information, images and publications, please visit our [website](https://www.genetex.com).