

ETL antibody [HL5037]

Cat. No. GTX645207

Host	Rabbit
Clonality	Monoclonal
Isotype	IgG
Applications	WB
Reactivity	Human

Package
100 µl, 25 µl

Applications

Application Note

*Optimal dilutions/concentrations should be determined by the researcher.

Suggested dilution	Recommended dilution
--------------------	----------------------

WB	1:500-1:10000
----	---------------

Not tested in other applications.

Observed MW (kDa)	40-50 (de-glycosylated form), 58-110 (glycosylated form) kDa.
--------------------------	---

Product Note	This antibody was raised against human ETL Extracellular domain.
---------------------	--

Properties

Form	Liquid
-------------	--------

Buffer	PBS
---------------	-----

Preservative	No preservatives
---------------------	------------------

Storage	Store as concentrated solution. Centrifuge briefly prior to opening vial. For short-term storage (1-2 weeks), store at 4°C. For long-term storage, aliquot and store at -20°C or below. Avoid multiple freeze-thaw cycles.
----------------	--

Concentration	1 mg/ml (Please refer to the vial label for the specific concentration.)
----------------------	--

Immunogen	Synthetic peptide encompassing a sequence within the Extracellular domain of human ETL. The exact sequence is proprietary.
------------------	--

Purification	Affinity purified by Protein A.
---------------------	---------------------------------

Conjugation	Unconjugated
--------------------	--------------

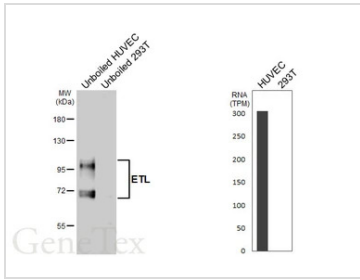
Note	For laboratory research use only. Not for any clinical, therapeutic, or diagnostic use in humans or animals. Not for animal or human consumption.
-------------	---

Note	Purchasers shall not, and agree not to enable third parties to, analyze, copy, reverse engineer or otherwise attempt to determine the structure or sequence of the product.
-------------	---



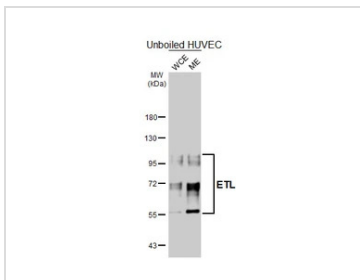
For full product information, images and publications, please visit our [website](#).

DATA IMAGES



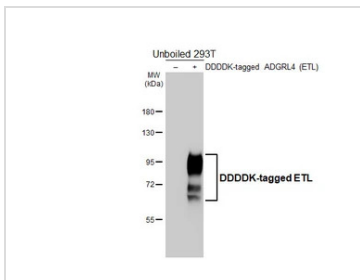
GTX645207 WB Image

Unboiled various whole cell extracts (30 µg) were separated by 7.5% SDS-PAGE, and the membrane was blotted with ETL antibody [HL5037] (GTX645207) diluted at 1:1000. The HRP-conjugated anti-rabbit IgG antibody (GTX213110-01) was used to detect the primary antibody, and the signal was developed with Trident femto Western HRP Substrate. Corresponding RNA expression data are based on Human Protein Atlas program.



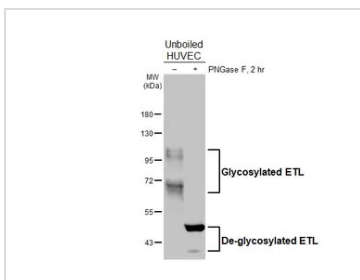
GTX645207 WB Image

Unboiled HUVEC whole cell and membrane extracts (30 µg) were separated by 7.5% SDS-PAGE, and the membrane was blotted with ETL antibody [HL5037] (GTX645207) diluted at 1:1000. The HRP-conjugated anti-rabbit IgG antibody (GTX213110-01) was used to detect the primary antibody, and the signal was developed with Trident femto Western HRP Substrate. (WCE: whole cell extract; ME: membrane extract) The observed M.W. is based on the publication: PMID: 31775252



GTX645207 WB Image

Non-transfected (-) and transfected (+) unboiled 293T whole cell extracts (30 µg) were separated by 7.5% SDS-PAGE, and the membrane was blotted with ETL antibody [HL5037] (GTX645207) diluted at 1:5000. The HRP-conjugated anti-rabbit IgG antibody (GTX213110-01) was used to detect the primary antibody. The observed M.W. is based on the publication: PMID: 31775252



GTX645207 WB Image

Untreated (-) and treated (+) Unboiled HUVEC whole cell extracts (50 µg) were separated by 7.5% SDS-PAGE, and the membrane was blotted with ETL antibody [HL5037] (GTX645207) diluted at 1:500. The HRP-conjugated anti-rabbit IgG antibody (GTX213110-01) was used to detect the primary antibody, and the signal was developed with Trident femto Western HRP Substrate.



For full product information, images and publications, please visit our [website](http://www.genetex.com).