

## GPR62 antibody [HL5046]

**Cat. No. GTX645216**

|                     |            |
|---------------------|------------|
| <b>Host</b>         | Rabbit     |
| <b>Clonality</b>    | Monoclonal |
| <b>Isotype</b>      | IgG        |
| <b>Applications</b> | WB         |
| <b>Reactivity</b>   | Human      |

**Package**  
100 µl, 25 µl

## Applications

**Application Note**

\*Optimal dilutions/concentrations should be determined by the researcher.

| Suggested dilution | Recommended dilution |
|--------------------|----------------------|
|--------------------|----------------------|

|    |                |
|----|----------------|
| WB | 1:1000-1:10000 |
|----|----------------|

Not tested in other applications.

**Product Note** This antibody was raised against human GPR62 Intracellular domain.

## Properties

**Form** Liquid

**Buffer** PBS

**Preservative** No preservatives

**Storage** Store as concentrated solution. Centrifuge briefly prior to opening vial. For short-term storage (1-2 weeks), store at 4°C. For long-term storage, aliquot and store at -20°C or below. Avoid multiple freeze-thaw cycles.

**Concentration** 1 mg/ml (Please refer to the vial label for the specific concentration.)

**Immunogen** Recombinant fragment encompassing a sequence within the Intracellular domain of human GPR62. The exact sequence is proprietary.

**Purification** Affinity purified by Protein A.

**Conjugation** Unconjugated

**Note**

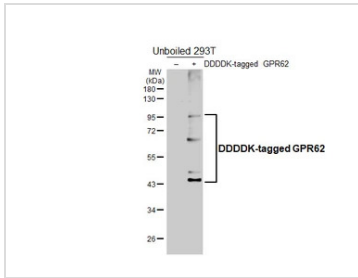
For laboratory research use only. Not for any clinical, therapeutic, or diagnostic use in humans or animals. Not for animal or human consumption.

Purchasers shall not, and agree not to enable third parties to, analyze, copy, reverse engineer or otherwise attempt to determine the structure or sequence of the product.



For full product information, images and publications, please visit our [website](#).

## DATA IMAGES

**GTX645216 WB Image**

Non-transfected (-) and transfected (+) unboiled 293T whole cell extracts (30 µg) were separated by 10% SDS-PAGE, and the membrane was blotted with GPR62 antibody [HL5046] (GTX645216) diluted at 1:5000. The HRP-conjugated anti-rabbit IgG antibody (GTX213110-01) was used to detect the primary antibody, and the signal was developed with Trident femto Western HRP Substrate.



For full product information, images and publications, please visit our [website](#).