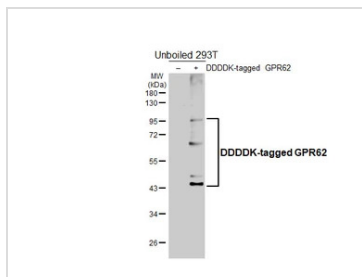


DATA IMAGES

**GTX645216 WB Image**

Non-transfected (-) and transfected (+) unboiled 293T whole cell extracts (30 μ g) were separated by 10% SDS-PAGE, and the membrane was blotted with GPR62 antibody [HL5046] (GTX645216) diluted at 1:5000. The HRP-conjugated anti-rabbit IgG antibody (GTX213110-01) was used to detect the primary antibody, and the signal was developed with Trident femto Western HRP Substrate.



For full product information, images and publications, please visit our [website](#).