

Claudin 18.2 antibody [HL5230]

Cat. No. GTX645486

Host	Rabbit
Clonality	Monoclonal
Isotype	IgG
Applications	WB, IHC-P, IHC-P (cell pellet)
Reactivity	Human

Package
100 µl, 25 µl

Applications

Application Note

*Optimal dilutions/concentrations should be determined by the researcher.

Suggested dilution	Recommended dilution
WB	1:1000-1:10000
IHC-P	Assay dependent
IHC-P (cell pellet)	Assay dependent

Not tested in other applications.

Observed MW (kDa)	19-25 kDa.
Product Note	This antibody is specific for human Claudin 18.2 protein, and it does not cross react with human Claudin 18 protein.

Properties

Form	Liquid
Buffer	PBS
Preservative	No preservatives
Storage	Store as concentrated solution. Centrifuge briefly prior to opening vial. For short-term storage (1-2 weeks), store at 4°C. For long-term storage, aliquot and store at -20°C or below. Avoid multiple freeze-thaw cycles.
Concentration	batch dependent (Please refer to the vial label for the specific concentration.)
Immunogen	Recombinant fragment of human Claudin 18.2.
Purification	Affinity purified by Protein A.
Conjugation	Unconjugated



For full product information, images and publications, please visit our [website](#).

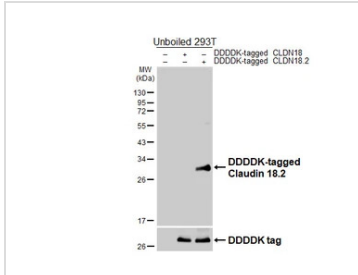
Date 2026 / 02 / 08 Page 1 of 2

For laboratory research use only. Not for any clinical, therapeutic, or diagnostic use in humans or animals. Not for animal or human consumption.

Note

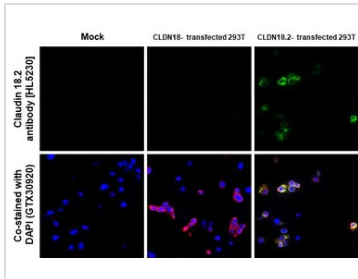
Purchasers shall not, and agree not to enable third parties to, analyze, copy, reverse engineer or otherwise attempt to determine the structure or sequence of the product.

DATA IMAGES



GTX645486 WB Image

Non-transfected (–) and transfected (+) unboiled 293T whole cell extracts (30 µg) were separated by 12% SDS-PAGE, and the membrane was blotted with Claudin 18.2 antibody [HL5230] (GTX645486) diluted at 1:5000. The HRP-conjugated anti-rabbit IgG antibody (GTX213110-01) was used to detect the primary antibody.



GTX645486 IHC-P (cell pellet) Image

Claudin 18.2 antibody [HL5230] detects Claudin 18.2 protein by immunohistochemical analysis.

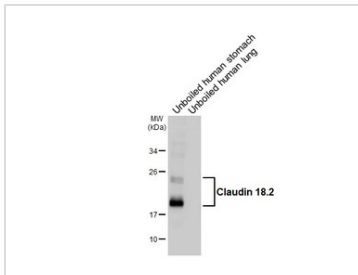
Sample: Mock, CLDN18 and CLDN18.2 transfected 293T cell FFPE Cell Pellet Blocks.

Green: Claudin 18.2 stained by Claudin 18.2 antibody [HL5230] (GTX645486) diluted at 1:1000.

Red: DDDDK tag antibody [GT1216] (GTX636630) diluted at 1:1000.

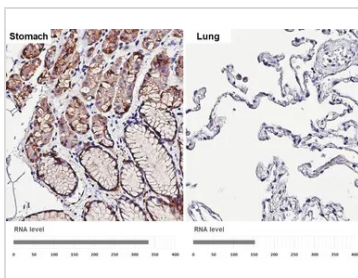
Blue: Fluoroshield with DAPI (GTX30920).

Antigen Retrieval: Citrate buffer, pH 6.0, 15 min



GTX645486 WB Image

Unboiled various tissue extracts (5 µg) were separated by 12% SDS-PAGE, and the membrane was blotted with Claudin 18.2 antibody [HL5230] (GTX645486) diluted at 1:1000. The HRP-conjugated anti-rabbit IgG antibody (GTX213110-01) was used to detect the primary antibody.



GTX645486 IHC-P Image

Claudin 18.2 antibody [HL5230] detects Claudin 18.2 protein by immunohistochemical analysis.

Sample: Paraffin-embedded human tissues.

Claudin 18.2 stained by Claudin 18.2 antibody [HL5230] (GTX645486) diluted at 1:30000.

Antigen Retrieval: Tris-EDTA buffer, pH 9.0, 15 min

Corresponding RNA levels (RPKM) in the tissues are based on NCBI database.



For full product information, images and publications, please visit our [website](https://www.genetex.com).