

Dengue virus NS3 protein antibody [HL5233]

Cat. No. GTX645489

Host	Rabbit
Clonality	Monoclonal
Isotype	IgG
Applications	WB
Reactivity	Dengue virus 1

Package
100 µl, 25 µl

Applications

Application Note

*Optimal dilutions/concentrations should be determined by the researcher.

Suggested dilution	Recommended dilution
WB	1:500-1:10000

Not tested in other applications.

Product Note

This antibody is specific for Dengue virus 1 NS3 protein, and it does not cross react with Dengue virus 2/3/4, JEV, and Zika NS3 protein.

Properties

Form	Liquid
Buffer	PBS
Preservative	No preservatives
Storage	Store as concentrated solution. Centrifuge briefly prior to opening vial. For short-term storage (1-2 weeks), store at 4°C. For long-term storage, aliquot and store at -20°C or below. Avoid multiple freeze-thaw cycles.
Concentration	1 mg/ml (Please refer to the vial label for the specific concentration.)
Immunogen	Synthetic peptide of Dengue virus NS3 protein.(Dengue virus type 1 (strain Brazil/97-11/1997))
Purification	Affinity purified by Protein A.
Conjugation	Unconjugated

Note

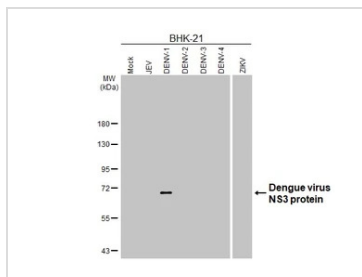
For laboratory research use only. Not for any clinical, therapeutic, or diagnostic use in humans or animals. Not for animal or human consumption.

Purchasers shall not, and agree not to enable third parties to, analyze, copy, reverse engineer or otherwise attempt to determine the structure or sequence of the product.



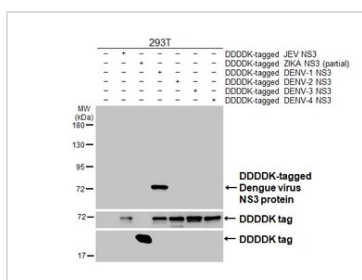
For full product information, images and publications, please visit our [website](#).

DATA IMAGES



GTX645489 WB Image

Non-infected and infected BHK-21 whole cell extracts (5 µg) were separated by 7.5% SDS-PAGE, and the membrane was blotted with Dengue virus NS3 protein antibody [HL5233] (GTX645489) diluted at 1:1000. The HRP-conjugated anti-rabbit IgG antibody (GTX213110-01) was used to detect the primary antibody.



GTX645489 WB Image

Non-transfected (-) and transfected (+) 293T whole cell extracts (30 µg) were separated by 7.5% SDS-PAGE, and the membrane was blotted with Dengue virus NS3 protein antibody [HL5233] (GTX645489) diluted at 1:5000. The HRP-conjugated anti-rabbit IgG antibody (GTX213110-01) was used to detect the primary antibody, and the signal was developed with Trident femto Western HRP Substrate.



For full product information, images and publications, please visit our [website](http://www.genetex.com).