

## P2Y4 antibody [HL5284]

**Cat. No. GTX645722**

<b>Host</b>	Rabbit
<b>Clonality</b>	Monoclonal
<b>Isotype</b>	IgG
<b>Applications</b>	WB
<b>Reactivity</b>	Human

**Package**  
100 µl, 25 µl

## Applications

**Application Note**

\*Optimal dilutions/concentrations should be determined by the researcher.

**Suggested dilution**                      **Recommended dilution**

WB    1:1000-1:10000

Not tested in other applications.

**Product Note**                      This antibody was raised against human P2Y4 Extracellular domain.

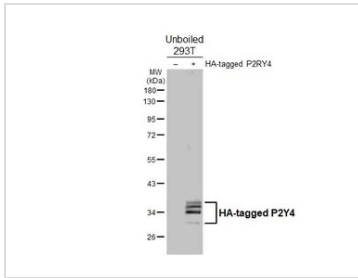
## Properties

**Form**                      Liquid**Buffer**                      PBS**Preservative**                      No preservatives**Storage**                      Store as concentrated solution. Centrifuge briefly prior to opening vial. For short-term storage (1-2 weeks), store at 4°C. For long-term storage, aliquot and store at -20°C or below. Avoid multiple freeze-thaw cycles.**Concentration**                      batch dependent (Please refer to the vial label for the specific concentration.)**Immunogen**                      Recombinant fragment encompassing a sequence within the Extracellular domain of human P2Y4. The exact sequence is proprietary.**Purification**                      Affinity purified by Protein A.**Conjugation**                      Unconjugated**Note**                      For laboratory research use only. Not for any clinical, therapeutic, or diagnostic use in humans or animals. Not for animal or human consumption.

Purchasers shall not, and agree not to enable third parties to, analyze, copy, reverse engineer or otherwise attempt to determine the structure or sequence of the product.

For full product information, images and publications, please visit our [website](#).

## DATA IMAGES

**GTX645722 WB Image**

Non-transfected (-) and transfected (+) unboiled 293T whole cell extracts (30 µg) were separated by 10% SDS-PAGE, and the membrane was blotted with P2Y4 antibody [HL5284] (GTX645722) diluted at 1:5000. The HRP-conjugated anti-rabbit IgG antibody (GTX213110-01) was used to detect the primary antibody.



For full product information, images and publications, please visit our [website](#).