

DFNA5 antibody

Cat. No. GTX64590

Host	Rabbit
Clonality	Polyclonal
Isotype	IgG
Application	WB, IHC-P
Reactivity	Human, Mouse, Rat

Package
100 µl

APPLICATION

Application Note

*Optimal dilutions/concentrations should be determined by the researcher.

Suggested dilution	Recommended dilution
WB	1:500 - 1:2000
IHC-P	1:50 - 1:100

Not tested in other applications.

Calculated MW 55 kDa. ([Note](#))

PROPERTIES

Form	Liquid
Buffer	PBS, 50% Glycerol
Preservative	0.02% Sodium azide
Storage	Store as concentrated solution. Centrifuge briefly prior to opening vial. For short-term storage (1-2 weeks), store at 4°C. For long-term storage, aliquot and store at -20°C or below. Avoid multiple freeze-thaw cycles.
Concentration	Batch dependent (Please refer to the vial label for the specific concentration.)
Immunogen	Recombinant fusion protein containing a sequence corresponding to amino acids 1-260 of human DFNA5 (NP_004394.1).
Purification	Purified by affinity chromatography
Conjugation	Unconjugated

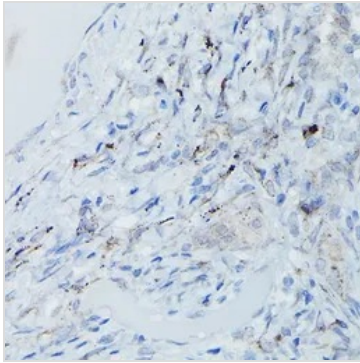
Note

For laboratory research use only. Not for any clinical, therapeutic, or diagnostic use in humans or animals. Not for animal or human consumption.

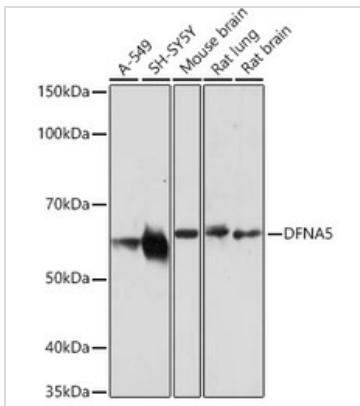
Purchasers shall not, and agree not to enable third parties to, analyze, copy, reverse engineer or otherwise attempt to determine the structure or sequence of the product.



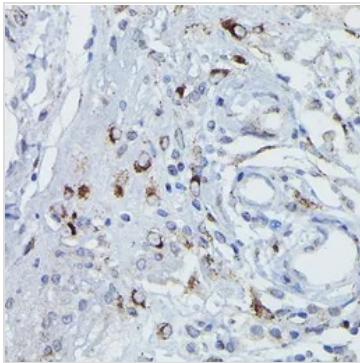
For full product information, images and publications, please visit our [website](#).

DATA IMAGES

GTX64590 IHC-P Image

IHC-P analysis of human pulmonary tuberculosis tissue using GTX64590 DFNA5 antibody.
Dilution : 1:50


GTX64590 WB Image

WB analysis of various sample lysates using GTX64590 DFNA5 antibody.
Dilution : 1:1000
Loading : 25µg per lane


GTX64590 IHC-P Image

IHC-P analysis of human pancreatic panniculitis tissue using GTX64590 DFNA5 antibody.
Dilution : 1:50



For full product information, images and publications, please visit our [website](#).