

## mGluR7 antibody [HL5417]

**Cat. No. GTX645985**

<b>Host</b>	Rabbit
<b>Clonality</b>	Monoclonal
<b>Isotype</b>	IgG
<b>Applications</b>	WB
<b>Reactivity</b>	Human, Mouse

**Package**  
100 µl, 25 µl

## Applications

**Application Note**

\*Optimal dilutions/concentrations should be determined by the researcher.

Suggested dilution	Recommended dilution
--------------------	----------------------

WB	1:1000-1:10000
----	----------------

Not tested in other applications.

<b>Observed MW (kDa)</b>	> 200 kDa.
--------------------------	------------

<b>Product Note</b>	This antibody was raised against human mGluR7 Extracellular domain.
---------------------	---

## Properties

<b>Form</b>	Liquid
-------------	--------

<b>Buffer</b>	PBS
---------------	-----

<b>Preservative</b>	No preservatives
---------------------	------------------

<b>Storage</b>	Store as concentrated solution. Centrifuge briefly prior to opening vial. For short-term storage (1-2 weeks), store at 4°C. For long-term storage, aliquot and store at -20°C or below. Avoid multiple freeze-thaw cycles.
----------------	--

<b>Concentration</b>	batch dependent (Please refer to the vial label for the specific concentration.)
----------------------	--

<b>Immunogen</b>	Synthetic peptide encompassing a sequence within the Extracellular domain of human mGluR7. The exact sequence is proprietary.
------------------	---

<b>Purification</b>	Affinity purified by Protein A.
---------------------	---------------------------------

<b>Conjugation</b>	Unconjugated
--------------------	--------------

**Note**

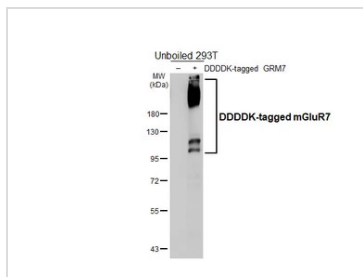
For laboratory research use only. Not for any clinical, therapeutic, or diagnostic use in humans or animals. Not for animal or human consumption.

Purchasers shall not, and agree not to enable third parties to, analyze, copy, reverse engineer or otherwise attempt to determine the structure or sequence of the product.



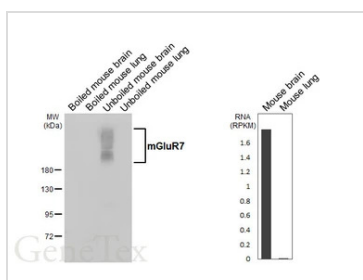
For full product information, images and publications, please visit our [website](#).

DATA IMAGES



**GTX645985 WB Image**

Non-transfected (-) and transfected (+) unboiled 293T whole cell extracts (30 µg) were separated by 7.5% SDS-PAGE, and the membrane was blotted with mGluR7 antibody [HL5417] (GTX645985) diluted at 1:5000. The HRP-conjugated anti-rabbit IgG antibody (GTX213110-01) was used to detect the primary antibody, and the signal was developed with Trident femto Western HRP Substrate.



**GTX645985 WB Image**

Boiled and unboiled various tissue extracts (50 µg) were separated by 7.5% SDS-PAGE, and the membrane was blotted with mGluR7 antibody [HL5417] (GTX645985) diluted at 1:1000. The HRP-conjugated anti-rabbit IgG antibody (GTX213110-01) was used to detect the primary antibody, and the signal was developed with Trident femto Western HRP Substrate. Corresponding RNA expression data are based on NCBI database.



For full product information, images and publications, please visit our [website](#).