

14-3-3 zeta antibody [HL5545]

Cat. No. GTX646219

Host	Rabbit
Clonality	Monoclonal
Isotype	IgG
Applications	WB, IHC-P
Reactivity	Human, Mouse, Rat

Package
100 µl, 25 µl

Applications

Application Note

*Optimal dilutions/concentrations should be determined by the researcher.

Suggested dilution	Recommended dilution
WB	Assay dependent
IHC-P	1:100-1:4000

Not tested in other applications.

Observed MW (kDa) 28 kDa.

Properties

Form	Liquid
Buffer	PBS
Preservative	No preservatives
Storage	Store as concentrated solution. Centrifuge briefly prior to opening vial. For short-term storage (1-2 weeks), store at 4°C. For long-term storage, aliquot and store at -20°C or below. Avoid multiple freeze-thaw cycles.
Immunogen	Synthetic peptide of human 14-3-3 zeta.
Purification	Affinity purified by Protein A.
Conjugation	Unconjugated

Note

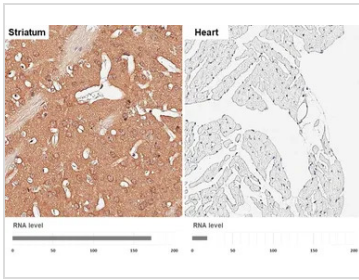
For laboratory research use only. Not for any clinical, therapeutic, or diagnostic use in humans or animals. Not for animal or human consumption.

Purchasers shall not, and agree not to enable third parties to, analyze, copy, reverse engineer or otherwise attempt to determine the structure or sequence of the product.



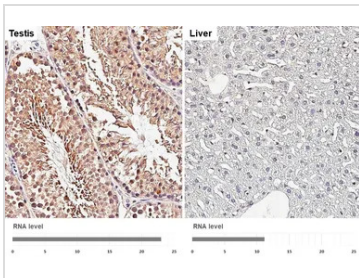
For full product information, images and publications, please visit our [website](#).

DATA IMAGES



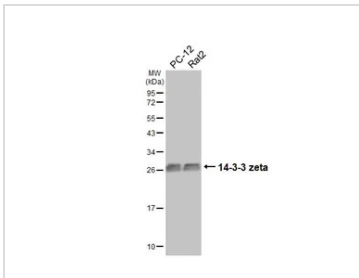
GTX646219 IHC-P Image

14-3-3 zeta antibody [HL5545] detects 14-3-3 zeta protein by immunohistochemical analysis.
 Sample: Paraffin-embedded mouse tissues.
 14-3-3 zeta stained by 14-3-3 zeta antibody [HL5545] (GTX646219) diluted at 1:4000.
 Antigen Retrieval: Citrate buffer, pH 6.0, 15 min
 Corresponding RNA levels (RPKM) in the tissues are based on NCBI database.



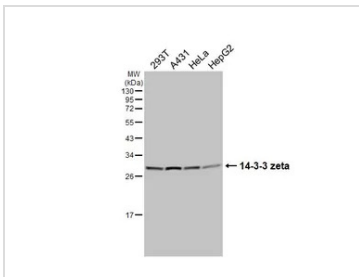
GTX646219 IHC-P Image

14-3-3 zeta antibody [HL5545] detects 14-3-3 zeta protein by immunohistochemical analysis.
 Sample: Paraffin-embedded mouse tissues.
 14-3-3 zeta stained by 14-3-3 zeta antibody [HL5545] (GTX646219) diluted at 1:4000.
 Antigen Retrieval: Citrate buffer, pH 6.0, 15 min
 Corresponding RNA levels (RPKM) in the tissues are based on NCBI database.



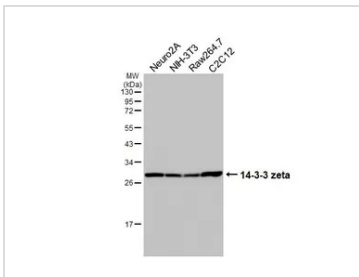
GTX646219 WB Image

Various whole cell extracts (30 µg) were separated by 12% SDS-PAGE, and the membrane was blotted with 14-3-3 zeta antibody [HL5545] (GTX646219) diluted at 1:1000. The HRP-conjugated anti-rabbit IgG antibody (GTX213110-01) was used to detect the primary antibody.



GTX646219 WB Image

Various whole cell extracts (30 µg) were separated by 12% SDS-PAGE, and the membrane was blotted with 14-3-3 zeta antibody [HL5545] (GTX646219) diluted at 1:1000. The HRP-conjugated anti-rabbit IgG antibody (GTX213110-01) was used to detect the primary antibody.



GTX646219 WB Image

Various whole cell extracts (30 µg) were separated by 12% SDS-PAGE, and the membrane was blotted with 14-3-3 zeta antibody [HL5545] (GTX646219) diluted at 1:1000. The HRP-conjugated anti-rabbit IgG antibody (GTX213110-01) was used to detect the primary antibody.



For full product information, images and publications, please visit our [website](#).