

SHARP2 antibody [HL5644]

Cat. No. GTX646333

Host	Rabbit
Clonality	Monoclonal
Isotype	IgG
Applications	IHC-P
Reactivity	Human

Package
100 µl, 25 µl

Applications

Application Note

*Optimal dilutions/concentrations should be determined by the researcher.

Suggested dilution	Recommended dilution
IHC-P	1:100-1:1000

Not tested in other applications.

Properties

Form	Liquid
Buffer	PBS
Preservative	No preservatives
Storage	Store as concentrated solution. Centrifuge briefly prior to opening vial. For short-term storage (1-2 weeks), store at 4°C. For long-term storage, aliquot and store at -20°C or below. Avoid multiple freeze-thaw cycles.
Immunogen	Synthetic peptide of human SHARP2.
Purification	Affinity purified by Protein A.
Conjugation	Unconjugated

Note

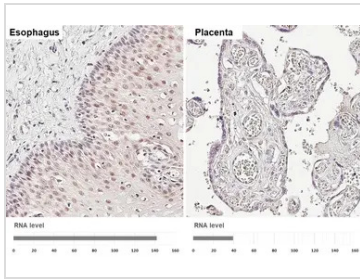
For laboratory research use only. Not for any clinical, therapeutic, or diagnostic use in humans or animals. Not for animal or human consumption.

Purchasers shall not, and agree not to enable third parties to, analyze, copy, reverse engineer or otherwise attempt to determine the structure or sequence of the product.



For full product information, images and publications, please visit our [website](#).

DATA IMAGES

**GTX646333 IHC-P Image**

SHARP2 antibody [HL5644] detects SHARP2 protein by immunohistochemical analysis.

Sample: Paraffin-embedded human tissues.

SHARP2 stained by SHARP2 antibody [HL5644] (GTX646333) diluted at 1:200.

Antigen Retrieval: Tris-EDTA buffer, pH 9.0, 15 min

Corresponding RNA levels (RPKM) in the tissues are based on NCBI database.



For full product information, images and publications, please visit our [website](#).