

## GnRH1 antibody

Cat. No. GTX64650

Host	Rabbit
Clonality	Polyclonal
Isotype	IgG
Applications	WB, ICC/IF, IHC-P
Reactivity	Human, Mouse

Package  
100 µl

## Applications

## Application Note

\*Optimal dilutions/concentrations should be determined by the researcher.

Suggested dilution	Recommended dilution
WB	1:500 - 1:2000
ICC/IF	1:50 - 1:200
IHC-P	1:50 - 1:100

Not tested in other applications.

Calculated MW 10 kDa. ( [Note](#) )

## Properties

Form	Liquid
Buffer	PBS, 50% Glycerol
Preservative	0.02% Sodium azide
Storage	Store as concentrated solution. Centrifuge briefly prior to opening vial. For short-term storage (1-2 weeks), store at 4°C. For long-term storage, aliquot and store at -20°C or below. Avoid multiple freeze-thaw cycles.
Concentration	Batch dependent (Please refer to the vial label for the specific concentration.)
Immunogen	Recombinant fusion protein containing a sequence corresponding to amino acids 24-92 of human GNRH1 (NP_001076580.1).
Purification	Purified by affinity chromatography
Conjugation	Unconjugated

## Note

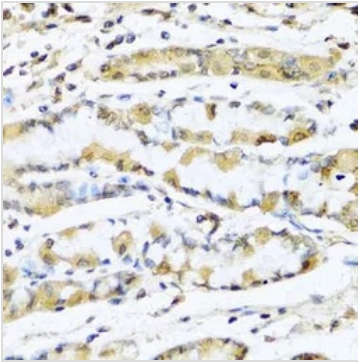
For laboratory research use only. Not for any clinical, therapeutic, or diagnostic use in humans or animals. Not for animal or human consumption.

Purchasers shall not, and agree not to enable third parties to, analyze, copy, reverse engineer or otherwise attempt to determine the structure or sequence of the product.



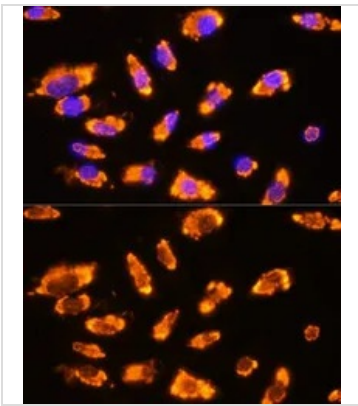
For full product information, images and publications, please visit our [website](#).

## DATA IMAGES



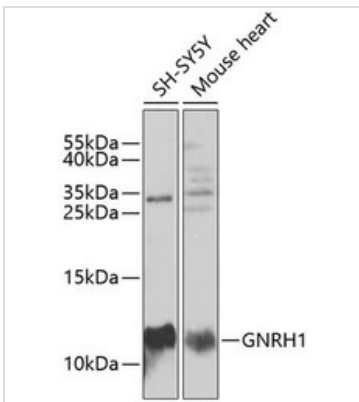
### GTX64650 IHC-P Image

IHC-P analysis of human stomach tissue using GTX64650 GnRH1 antibody.  
Dilution : 1:100



### GTX64650 ICC/IF Image

ICC/IF analysis of L929 cells using GTX64650 GnRH1 antibody.  
Blue : DAPI  
Dilution : 1:100



### GTX64650 WB Image

WB analysis of various sample lysates using GTX64650 GnRH1 antibody.  
Dilution : 1:1000  
Loading : 25µg per lane



For full product information, images and publications, please visit our [website](#).