

Haptoglobin antibody [HL5969]

Cat. No. GTX647583

Host	Rabbit
Clonality	Monoclonal
Isotype	IgG
Applications	WB
Reactivity	Human

Package
100 µl, 25 µl

Applications

Application Note

*Optimal dilutions/concentrations should be determined by the researcher.

Suggested dilution	Recommended dilution
--------------------	----------------------

WB	1:500-1:3000
----	--------------

Not tested in other applications.

Observed MW (kDa)	40-50 kDa.
-------------------	------------

Properties

Form	Liquid
------	--------

Buffer	PBS
--------	-----

Preservative	No preservatives
--------------	------------------

Storage	Store as concentrated solution. Centrifuge briefly prior to opening vial. For short-term storage (1-2 weeks), store at 4°C. For long-term storage, aliquot and store at -20°C or below. Avoid multiple freeze-thaw cycles.
---------	--

Concentration	batch dependent (Please refer to the vial label for the specific concentration.)
---------------	--

Immunogen	Recombinant fragment of human Haptoglobin.
-----------	--

Purification	Affinity purified by Protein A.
--------------	---------------------------------

Conjugation	Unconjugated
-------------	--------------

Note

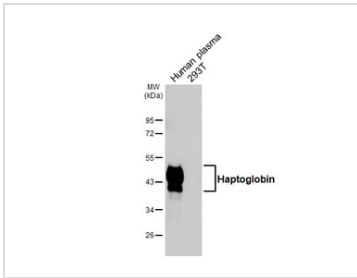
For laboratory research use only. Not for any clinical, therapeutic, or diagnostic use in humans or animals. Not for animal or human consumption.

Purchasers shall not, and agree not to enable third parties to, analyze, copy, reverse engineer or otherwise attempt to determine the structure or sequence of the product.



For full product information, images and publications, please visit our [website](#).

DATA IMAGES

**GTX647583 WB Image**

Human plasma and 293T whole cell extract (30 μ g) were separated by 10% SDS-PAGE, and the membrane was blotted with Haptoglobin antibody [HL5969] (GTX647583) diluted at 1:1000. The HRP-conjugated anti-rabbit IgG antibody (GTX213110-01) was used to detect the primary antibody.



For full product information, images and publications, please visit our [website](#).