

Human Heregulin Beta-1 protein (active)

Cat. No. GTX65114-pro
Applications Functional Assay

Species Human

Package

50 µg

PRODUCT

Summary

Recombinant Human Heregulin-beta1 (HRG1-beta1) is a 7.5 kDa polypeptide consisting of only the EGF domain of heregulin-beta1 (65 amino acid residues).

Applications

Application Note

The ED₅₀ was determined by the dose-dependent stimulation of the proliferation of human MCF-7 cells is < 0.5 ng/ml, corresponding to a specific activity of > 2 x 10⁶ units/mg.

Properties

Form Lyophilized powder

Buffer Batch dependent (please contact us for details)

Storage Store at -20°C or below. After reconstitution, keep as concentrated solution. Aliquot and avoid freeze-thaw cycles.

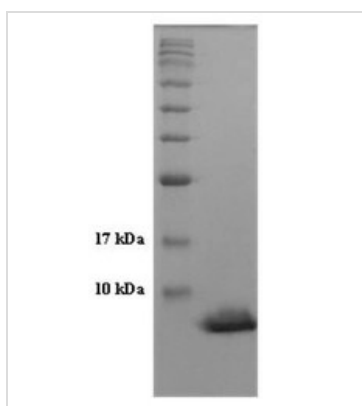
Expression System E. coli

Purity ??98% by SDS-PAGE and HPLC.

Conjugation Unconjugated

Note For In vitro laboratory use only. Not for any clinical, therapeutic, or diagnostic use in humans or animals. Not for animal or human consumption.

DATA IMAGES



GTX65114-pro Image

SDS-PAGE (15%) of purified HRG1-β protein:

Lane 1: Marker

Lane 2: HRG1-β protein (257-382 aa): 20 µg



For full product information, images and publications, please visit our [website](https://www.genetex.com).