

LAMTOR1 antibody

Cat. No. GTX65564

Host	Rabbit
Clonality	Polyclonal
Isotype	IgG
Applications	WB, ICC/IF
Reactivity	Human, Mouse, Rat

Package
100 µl

Applications

Application Note

*Optimal dilutions/concentrations should be determined by the researcher.

Suggested dilution	Recommended dilution
WB	1:500 - 1:1000
ICC/IF	1:50 - 1:100

Not tested in other applications.

Calculated MW 18 kDa. ([Note](#))

Properties

Form	Liquid
Buffer	PBS, 50% Glycerol
Preservative	0.02% Sodium azide
Storage	Store as concentrated solution. Centrifuge briefly prior to opening vial. For short-term storage (1-2 weeks), store at 4°C. For long-term storage, aliquot and store at -20°C or below. Avoid multiple freeze-thaw cycles.
Concentration	Batch dependent (Please refer to the vial label for the specific concentration.)
Immunogen	Recombinant fusion protein containing a sequence corresponding to amino acids 1-161 of human LAMTOR1 (NP_060377.1).
Purification	Purified by affinity chromatography
Conjugation	Unconjugated

Note

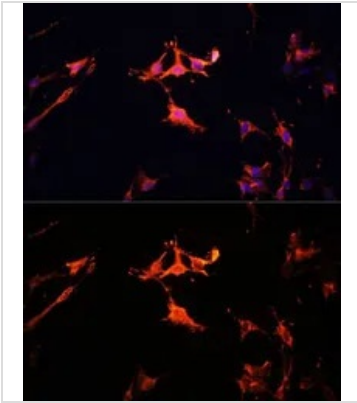
For laboratory research use only. Not for any clinical, therapeutic, or diagnostic use in humans or animals. Not for animal or human consumption.

Purchasers shall not, and agree not to enable third parties to, analyze, copy, reverse engineer or otherwise attempt to determine the structure or sequence of the product.



For full product information, images and publications, please visit our [website](#).

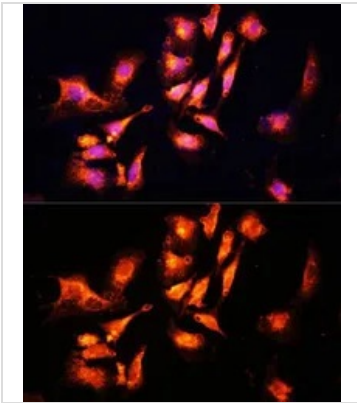
DATA IMAGES

**GTX65564 ICC/IF Image**

ICC/IF analysis of C6 cells using GTX65564 LAMTOR1 antibody.

Blue : DAPI

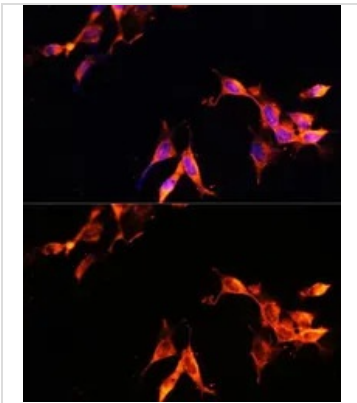
Dilution : 1:100

**GTX65564 ICC/IF Image**

ICC/IF analysis of U2OS cells using GTX65564 LAMTOR1 antibody.

Blue : DAPI

Dilution : 1:100

**GTX65564 ICC/IF Image**

ICC/IF analysis of NIH/3T3 cells using GTX65564 LAMTOR1 antibody.

Blue : DAPI

Dilution : 1:100



For full product information, images and publications, please visit our [website](#).