

BCAP31 antibody

Cat. No. GTX65823

Host	Rabbit
Clonality	Polyclonal
Isotype	IgG
Applications	WB, ICC/IF, IP
Reactivity	Human, Mouse, Rat

Package
100 µl

Applications

Application Note

*Optimal dilutions/concentrations should be determined by the researcher.

Suggested dilution	Recommended dilution
WB	1:500 - 1:2000
ICC/IF	1:50 - 1:100
IP	1:50 - 1:100

Not tested in other applications.

Calculated MW 28 kDa. ([Note](#))

Properties

Form	Liquid
Buffer	PBS, 50% Glycerol
Preservative	0.02% Sodium azide
Storage	Store as concentrated solution. Centrifuge briefly prior to opening vial. For short-term storage (1-2 weeks), store at 4°C. For long-term storage, aliquot and store at -20°C or below. Avoid multiple freeze-thaw cycles.
Concentration	Batch dependent (Please refer to the vial label for the specific concentration.)
Immunogen	Recombinant fusion protein containing a sequence corresponding to amino acids 127-246 of human BCAP31 (NP_001243376.1).
Purification	Purified by affinity chromatography
Conjugation	Unconjugated

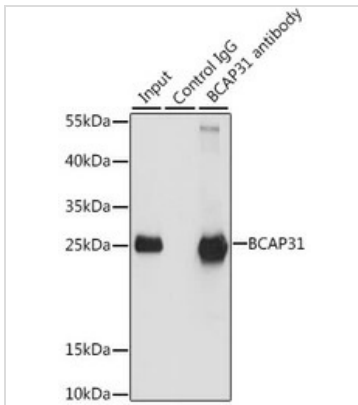
Note

For laboratory research use only. Not for any clinical, therapeutic, or diagnostic use in humans or animals. Not for animal or human consumption.

Purchasers shall not, and agree not to enable third parties to, analyze, copy, reverse engineer or otherwise attempt to determine the structure or sequence of the product.



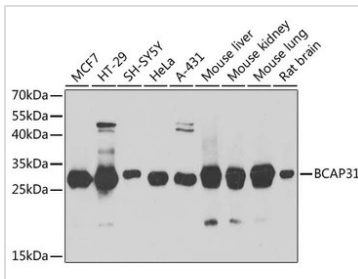
For full product information, images and publications, please visit our [website](#).

DATA IMAGES

GTX65823 IP Image

IP analysis of HeLa cell lysate using GTX65823 BCAP31 antibody.

Antibody amount : 3 μ g / 200 μ g lysate

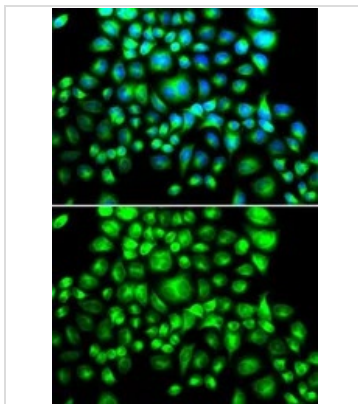
Dilution : 1:1000


GTX65823 WB Image

WB analysis of various sample lysates using GTX65823 BCAP31 antibody.

Dilution : 1:1000

Loading : 25 μ g per lane


GTX65823 ICC/IF Image

ICC/IF analysis of U2OS cells using GTX65823 BCAP31 antibody.

Blue : DAPI



For full product information, images and publications, please visit our [website](https://www.genetex.com).