

## Hsp90 beta antibody

Cat. No. GTX65840

Host	Rabbit
Clonality	Polyclonal
Isotype	IgG
Application	WB, ICC/IF, IHC-P
Reactivity	Human, Mouse, Rat, Monkey

Package  
100 µl

## APPLICATION

## Application Note

\*Optimal dilutions/concentrations should be determined by the researcher.

Suggested dilution	Recommended dilution
WB	1:500 - 1:2000
ICC/IF	1:50 - 1:200
IHC-P	1:50 - 1:200

Not tested in other applications.

Calculated MW 83 kDa. ( [Note](#) )

## PROPERTIES

Form	Liquid
Buffer	PBS, 50% Glycerol
Preservative	0.02% Sodium azide
Storage	Store as concentrated solution. Centrifuge briefly prior to opening vial. For short-term storage (1-2 weeks), store at 4°C. For long-term storage, aliquot and store at -20°C or below. Avoid multiple freeze-thaw cycles.
Concentration	Batch dependent (Please refer to the vial label for the specific concentration.)
Immunogen	Recombinant fusion protein containing a sequence corresponding to amino acids 1-300 of human HSP90AB1 (NP_031381.2).
Purification	Purified by affinity chromatography
Conjugation	Unconjugated

## Note

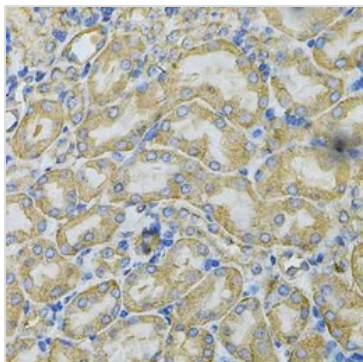
For laboratory research use only. Not for any clinical, therapeutic, or diagnostic use in humans or animals. Not for animal or human consumption.

Purchasers shall not, and agree not to enable third parties to, analyze, copy, reverse engineer or otherwise attempt to determine the structure or sequence of the product.



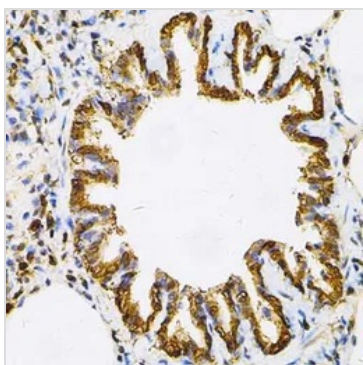
For full product information, images and publications, please visit our [website](#).

## DATA IMAGES



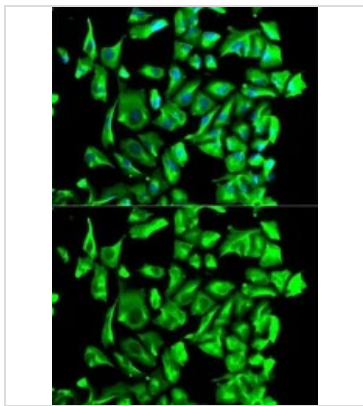
### GTx65840 IHC-P Image

IHC-P analysis of mouse kidney tissue using GTx65840 Hsp90 beta antibody.  
Dilution : 1:100



### GTx65840 IHC-P Image

IHC-P analysis of rat lung tissue using GTx65840 Hsp90 beta antibody.  
Dilution : 1:100



### GTx65840 ICC/IF Image

ICC/IF analysis of U2OS cells using GTx65840 Hsp90 beta antibody.  
Blue : DAPI



For full product information, images and publications, please visit our [website](https://www.genetex.com).