

## ATG13 antibody

Cat. No. GTX65842

Host	Rabbit
Clonality	Polyclonal
Isotype	IgG
Application	WB, ICC/IF, IHC-P
Reactivity	Human, Rat

Package  
100 µl

## APPLICATION

## Application Note

\*Optimal dilutions/concentrations should be determined by the researcher.

Suggested dilution	Recommended dilution
WB	1:500 - 1:2000
ICC/IF	1:50 - 1:200
IHC-P	1:50 - 1:200

Not tested in other applications.

Calculated MW 57 kDa. ( [Note](#) )

## PROPERTIES

Form	Liquid
Buffer	PBS, 50% Glycerol
Preservative	0.02% Sodium azide
Storage	Store as concentrated solution. Centrifuge briefly prior to opening vial. For short-term storage (1-2 weeks), store at 4°C. For long-term storage, aliquot and store at -20°C or below. Avoid multiple freeze-thaw cycles.
Concentration	Batch dependent (Please refer to the vial label for the specific concentration.)
Immunogen	Recombinant fusion protein containing a sequence corresponding to amino acids 281-480 of human ATG13 (NP_055556.2).
Purification	Purified by affinity chromatography
Conjugation	Unconjugated

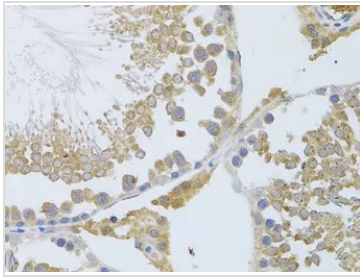
**Note** For laboratory research use only. Not for any clinical, therapeutic, or diagnostic use in humans or animals. Not for animal or human consumption.

Purchasers shall not, and agree not to enable third parties to, analyze, copy, reverse engineer or otherwise attempt to determine the structure or sequence of the product.



For full product information, images and publications, please visit our [website](#).

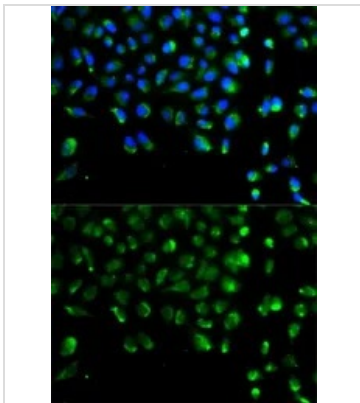
## DATA IMAGES



### GTX65842 IHC-P Image

IHC-P analysis of rat testis tissue using GTX65842 ATG13 antibody.

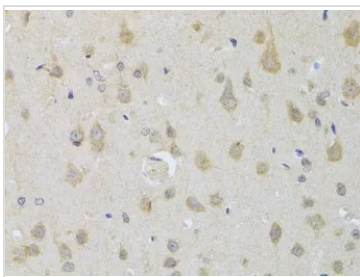
Dilution : 1:100



### GTX65842 ICC/IF Image

ICC/IF analysis of A549 cells using GTX65842 ATG13 antibody.

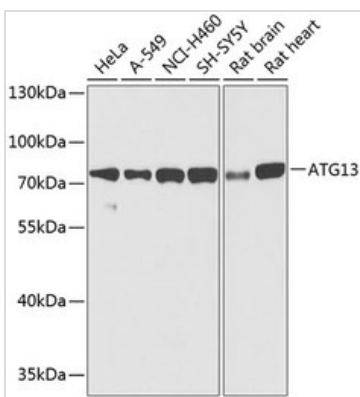
Blue : DAPI



### GTX65842 IHC-P Image

IHC-P analysis of rat brain tissue using GTX65842 ATG13 antibody.

Dilution : 1:100



### GTX65842 WB Image

WB analysis of various sample lysates using GTX65842 ATG13 antibody. The signal was developed with ECL plus-Enhanced.

Dilution : 1:1000

Loading : 25µg per lane



For full product information, images and publications, please visit our [website](https://www.genetex.com).