

CTCF antibody

Cat. No. GTX65930

Host	Rabbit
Clonality	Polyclonal
Isotype	IgG
Application	IHC-P, ChIP assay
Reactivity	Human, Mouse, Rat

Package
100 µl

APPLICATION

Application Note

*Optimal dilutions/concentrations should be determined by the researcher.

Suggested dilution	Recommended dilution
IHC-P	Assay dependent
ChIP assay	Assay dependent

Not tested in other applications.

Calculated MW 83 kDa. ([Note](#))

PROPERTIES

Form	Liquid
Buffer	PBS, 50% Glycerol
Preservative	0.02% Sodium azide
Storage	Store as concentrated solution. Centrifuge briefly prior to opening vial. For short-term storage (1-2 weeks), store at 4°C. For long-term storage, aliquot and store at -20°C or below. Avoid multiple freeze-thaw cycles.
Concentration	Batch dependent (Please refer to the vial label for the specific concentration.)
Immunogen	Recombinant fusion protein containing a sequence corresponding to amino acids 1-260 of human CTCF (NP_006556.1).
Purification	Purified by affinity chromatography
Conjugation	Unconjugated

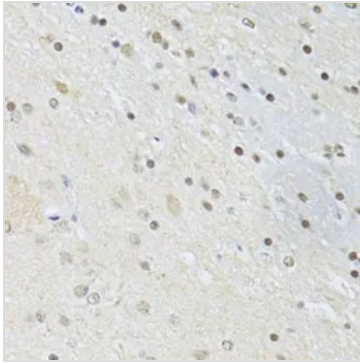
Note

For laboratory research use only. Not for any clinical, therapeutic, or diagnostic use in humans or animals. Not for animal or human consumption.

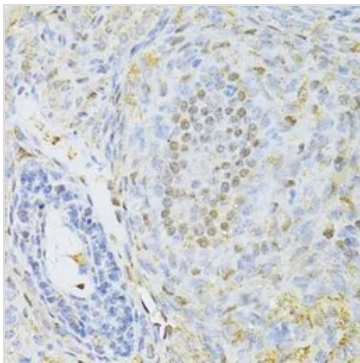
Purchasers shall not, and agree not to enable third parties to, analyze, copy, reverse engineer or otherwise attempt to determine the structure or sequence of the product.



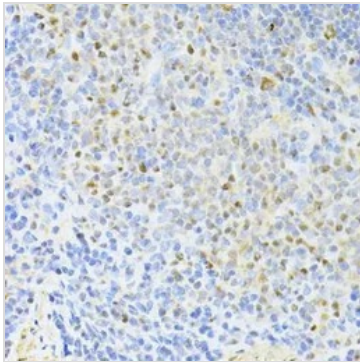
For full product information, images and publications, please visit our [website](#).

DATA IMAGES

GTX65930 IHC-P Image

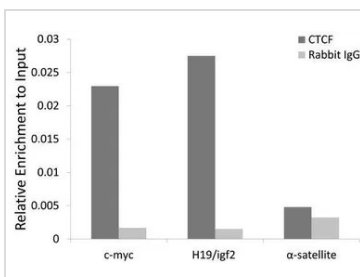
IHC-P analysis of rat brain tissue using GTX65930 CTCF antibody.
Dilution : 1:100


GTX65930 IHC-P Image

IHC-P analysis of rat ovary tissue using GTX65930 CTCF antibody.
Dilution : 1:100


GTX65930 IHC-P Image

IHC-P analysis of rat spleen tissue using GTX65930 CTCF antibody.
Dilution : 1:100


GTX65930 ChIP assay Image

ChIP analysis of extracts of HCT116 cells using GTX65930 CTCF antibody. The amount of immunoprecipitated DNA was checked by quantitative PCR. Histogram was constructed by the ratios of the immunoprecipitated DNA to the input.



For full product information, images and publications, please visit our [website](https://www.genetex.com).