

## SorLA antibody

Cat. No. GTX66154

|              |            |
|--------------|------------|
| Host         | Rabbit     |
| Clonality    | Polyclonal |
| Isotype      | IgG        |
| Applications | WB         |
| Reactivity   | Human      |

Package  
100 µl

## Applications

## Application Note

\*Optimal dilutions/concentrations should be determined by the researcher.

| Suggested dilution                | Recommended dilution |
|-----------------------------------|----------------------|
| WB                                | 1:500 - 1:2000       |
| Not tested in other applications. |                      |

Calculated MW 248 kDa. ( [Note](#) )

## Properties

|               |  |
|---------------|--|
| Form          | Liquid   |
| Buffer        | PBS, 50% Glycerol  |
| Preservative  | 0.02% Sodium azide   |
| Storage       | Store as concentrated solution. Centrifuge briefly prior to opening vial. For short-term storage (1-2 weeks), store at 4°C. For long-term storage, aliquot and store at -20°C or below. Avoid multiple freeze-thaw cycles. |
| Concentration | Batch dependent (Please refer to the vial label for the specific concentration.)   |
| Immunogen     | Recombinant fusion protein containing a sequence corresponding to amino acids 2065-2214 of human SORL1 (NP_003096.1).  |
| Purification  | Purified by affinity chromatography  |
| Conjugation   | Unconjugated   |

## Note

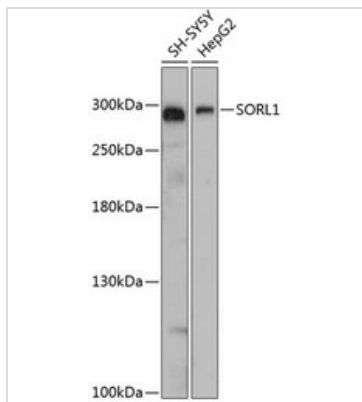
For laboratory research use only. Not for any clinical, therapeutic, or diagnostic use in humans or animals. Not for animal or human consumption.

Purchasers shall not, and agree not to enable third parties to, analyze, copy, reverse engineer or otherwise attempt to determine the structure or sequence of the product.



For full product information, images and publications, please visit our [website](#).

## DATA IMAGES



### GTX66154 WB Image

WB analysis of various sample lysates using GTX66154 SorLA antibody. The signal was developed with ECL plus-Enhanced.

Dilution : 1:3000

Loading : 25µg per lane



For full product information, images and publications, please visit our [website](https://www.genetex.com).