

RRM1 antibody

Cat. No. GTX66190

Host	Rabbit
Clonality	Polyclonal
Isotype	IgG
Applications	WB, ICC/IF, IP
Reactivity	Human, Mouse

Package
100 µl

Applications

Application Note

*Optimal dilutions/concentrations should be determined by the researcher.

Suggested dilution	Recommended dilution
WB	1:500 - 1:2000
ICC/IF	1:50 - 1:200
IP	1:20 - 1:50

Not tested in other applications.

Calculated MW 90 kDa. ([Note](#))

Properties

Form	Liquid
Buffer	PBS, 50% Glycerol
Preservative	0.02% Sodium azide
Storage	Store as concentrated solution. Centrifuge briefly prior to opening vial. For short-term storage (1-2 weeks), store at 4°C. For long-term storage, aliquot and store at -20°C or below. Avoid multiple freeze-thaw cycles.
Concentration	Batch dependent (Please refer to the vial label for the specific concentration.)
Immunogen	Recombinant fusion protein containing a sequence corresponding to amino acids 593-792 of human RRM1 (NP_001024.1).
Purification	Purified by affinity chromatography
Conjugation	Unconjugated

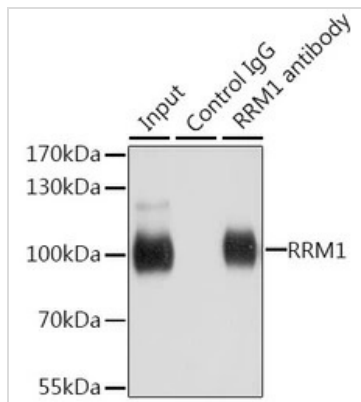
Note

For laboratory research use only. Not for any clinical, therapeutic, or diagnostic use in humans or animals. Not for animal or human consumption.

Purchasers shall not, and agree not to enable third parties to, analyze, copy, reverse engineer or otherwise attempt to determine the structure or sequence of the product.



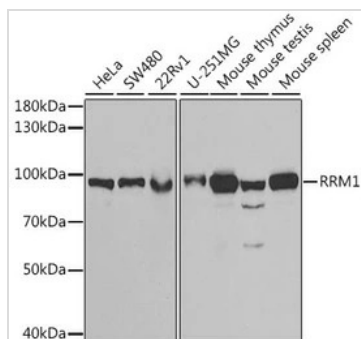
For full product information, images and publications, please visit our [website](#).

DATA IMAGES

GTX66190 IP Image

IP analysis of HeLa cell lysate using GTX66190 RRM1 antibody.

Antibody amount : 1 μ g / 200 μ g lysate

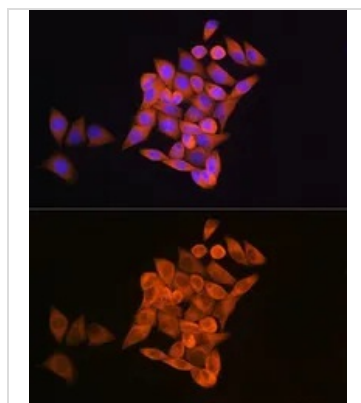
Dilution : 1:500


GTX66190 WB Image

WB analysis of various sample lysates using GTX66190 RRM1 antibody.

Dilution : 1:1000

Loading : 25 μ g per lane


GTX66190 ICC/IF Image

ICC/IF analysis of HeLa cells using GTX66190 RRM1 antibody.

Blue : DAPI

Dilution : 1:100



For full product information, images and publications, please visit our [website](https://www.genetex.com).