

## Cytokeratin 14 antibody

Cat. No. GTX66326

|              |                   |
|--------------|-------------------|
| Host         | Rabbit            |
| Clonality    | Polyclonal        |
| Isotype      | IgG               |
| Applications | WB, IHC-P         |
| Reactivity   | Human, Mouse, Rat |

Package  
100 µl

## Applications

## Application Note

\*Optimal dilutions/concentrations should be determined by the researcher.

| Suggested dilution | Recommended dilution |
|--------------------|----------------------|
| WB                 | 1:500 - 1:2000       |
| IHC-P              | 1:50 - 1:100         |

Not tested in other applications.

Calculated MW 52 kDa. ( [Note](#) )

## Properties

|               |  |
|---------------|--|
| Form          | Liquid   |
| Buffer        | PBS, 50% Glycerol  |
| Preservative  | 0.02% Sodium azide   |
| Storage       | Store as concentrated solution. Centrifuge briefly prior to opening vial. For short-term storage (1-2 weeks), store at 4°C. For long-term storage, aliquot and store at -20°C or below. Avoid multiple freeze-thaw cycles. |
| Concentration | Batch dependent (Please refer to the vial label for the specific concentration.)   |
| Immunogen     | A synthetic peptide corresponding to a sequence within amino acids 400 to the C-terminus of human KRT14 (NP_000517.2).   |
| Purification  | Purified by affinity chromatography  |
| Conjugation   | Unconjugated   |

## Note

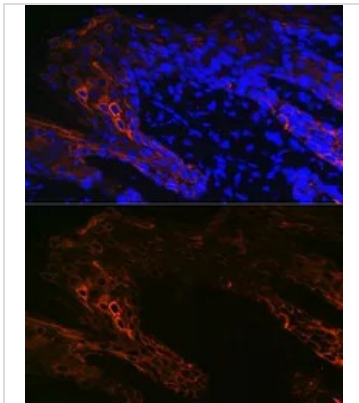
For laboratory research use only. Not for any clinical, therapeutic, or diagnostic use in humans or animals. Not for animal or human consumption.

Purchasers shall not, and agree not to enable third parties to, analyze, copy, reverse engineer or otherwise attempt to determine the structure or sequence of the product.



For full product information, images and publications, please visit our [website](#).

## DATA IMAGES

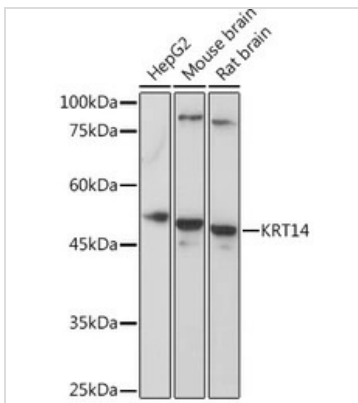


### GTX66326 IHC-P Image

IHC-P analysis of Human skin tissue using GTX66326 Cytokeratin 14 antibody.

Blue : DAPI

Dilution : 1:100

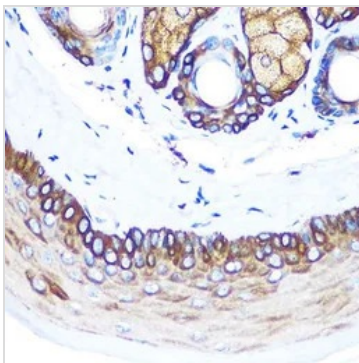


### GTX66326 WB Image

WB analysis of various sample lysates using GTX66326 Cytokeratin 14 antibody.

Dilution : 1:5000

Loading : 25µg per lane



### GTX66326 IHC-P Image

IHC-P analysis of mouse skin tissue using GTX66326 Cytokeratin 14 antibody.

Dilution : 1:100



For full product information, images and publications, please visit our [website](https://www.genetex.com).