

RPS6 (phospho Ser240/Ser244) antibody

Cat. No. GTX66604

Host	Rabbit
Clonality	Polyclonal
Isotype	IgG
Application	WB, IP
Reactivity	Human, Mouse

Package
100 µl

APPLICATION

Application Note

*Optimal dilutions/concentrations should be determined by the researcher.

Suggested dilution	Recommended dilution
WB	1:500 - 1:2000
IP	1:50 - 1:100

Not tested in other applications.

Calculated MW 29 kDa. ([Note](#))

PROPERTIES

Form	Liquid
Buffer	PBS, 50% Glycerol
Preservative	0.02% Sodium azide
Storage	Store as concentrated solution. Centrifuge briefly prior to opening vial. For short-term storage (1-2 weeks), store at 4°C. For long-term storage, aliquot and store at -20°C or below. Avoid multiple freeze-thaw cycles.
Concentration	Batch dependent (Please refer to the vial label for the specific concentration.)
Immunogen	A phospho specific peptide corresponding to residues surrounding S240/244 of human RPS6KB1
Purification	Purified by affinity chromatography
Conjugation	Unconjugated

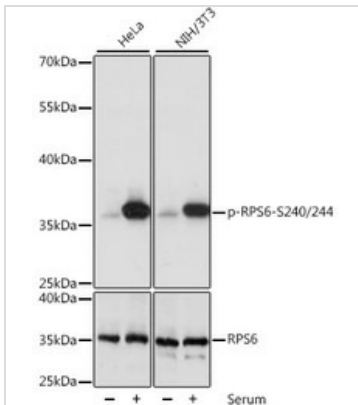
Note

For laboratory research use only. Not for any clinical, therapeutic, or diagnostic use in humans or animals. Not for animal or human consumption.

Purchasers shall not, and agree not to enable third parties to, analyze, copy, reverse engineer or otherwise attempt to determine the structure or sequence of the product.



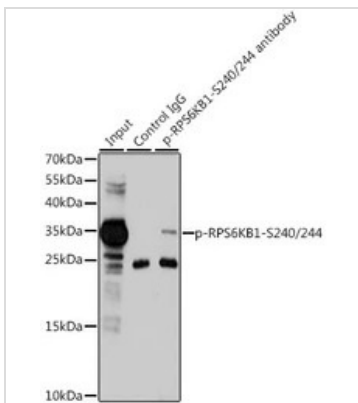
For full product information, images and publications, please visit our [website](#).

DATA IMAGES

GTX66604 WB Image

WB analysis of HeLa cells treated by 10% FBS at 37°C for 30 minutes after serum-starvation overnight and NIH/3T3 cells treated by 10% FBS at 37°C for 30 minutes after serum-starvation overnight using GTX66604 RPS6 (phospho Ser240/Ser244) antibody.

Dilution : 1:1000

Loading : 25µg per lane


GTX66604 IP Image

IP analysis of 293T cell lysate using GTX66604 RPS6 (phospho Ser240/Ser244) antibody.

Antibody amount : 3µg / 200µg lysate

Dilution : 1:1000



For full product information, images and publications, please visit our [website](https://www.genetex.com).