

ULK1 antibody

Cat. No. GTX66613

Host	Rabbit
Clonality	Polyclonal
Isotype	IgG
Application	WB
Reactivity	Human, Mouse, Rat

Package
100 µl

APPLICATION

Application Note

*Optimal dilutions/concentrations should be determined by the researcher.

Suggested dilution	Recommended dilution
WB	1:500-1:1000
Not tested in other applications.	

Calculated MW 113 kDa. ([Note](#))

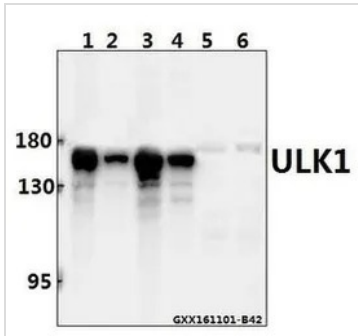
PROPERTIES

Form	Liquid
Buffer	PBS
Preservative	0.05% Sodium azide
Storage	Store as concentrated solution. Centrifuge briefly prior to opening vial. For short-term storage (1-2 weeks), store at 4°C. For long-term storage, aliquot and store at -20°C or below. Avoid multiple freeze-thaw cycles.
Concentration	1 mg/ml (Please refer to the vial label for the specific concentration.)
Immunogen	A synthetic peptide corresponding to residues in Human VPS34 (291-340aa; Uniprot#O75385)
Purification	Purified by antigen-affinity chromatography From serum
Purity	> 95% (by SDS-PAGE)
Conjugation	Unconjugated
Note	For In vitro laboratory use only. Not for any clinical, therapeutic, or diagnostic use in humans or animals. Not for animal or human consumption.



For full product information, images and publications, please visit our [website](#).

DATA IMAGES



GTX66613 WB Image

WB analysis of various samples using GTX66613 ULK1 antibody.

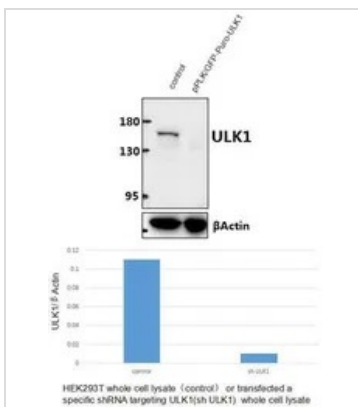
Lane1 : HCC827 whole cell lysate(40ug)

Lane2 : HCT116 whole cell lysate(40ug)

Lane3 : C6 whole cell lysate(40ug)

Lane4 : A54 whole cell lysate(40ug)

Dilution : 1:500



GTX66613 WB Image

WB analysis of extracts from HEK293T (control) or ULK1 shRNA transfected cells using GTX66613 ULK1 antibody.



For full product information, images and publications, please visit our [website](https://www.genetex.com).