

Raptor (phospho Ser792) antibody

Cat. No. GTX66614

Host	Rabbit
Clonality	Polyclonal
Isotype	IgG
Application	WB
Reactivity	Human

Package
100 µl

APPLICATION

Application Note

*Optimal dilutions/concentrations should be determined by the researcher.

Suggested dilution	Recommended dilution
WB	1:500-1:1000

Not tested in other applications.

Calculated MW 149 kDa. ([Note](#))

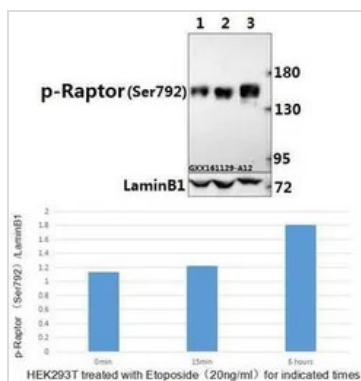
PROPERTIES

Form	Liquid
Buffer	PBS, 50% Glycerol
Preservative	0.02% Sodium azide
Storage	Store as concentrated solution. Centrifuge briefly prior to opening vial. For short-term storage (1-2 weeks), store at 4°C. For long-term storage, aliquot and store at -20°C or below. Avoid multiple freeze-thaw cycles.
Concentration	1 mg/ml (Please refer to the vial label for the specific concentration.)
Immunogen	Synthetic phosphopeptide derived from human Raptor around the phosphorylation site of Ser792.
Purification	Purified by antigen-affinity chromatography From serum
Purity	> 95% (by SDS-PAGE)
Conjugation	Unconjugated
Note	For In vitro laboratory use only. Not for any clinical, therapeutic, or diagnostic use in humans or animals. Not for animal or human consumption.



For full product information, images and publications, please visit our [website](#).

DATA IMAGES



GTX66614 WB Image

WB analysis of various samples using GTX66614 Raptor (phospho Ser792) antibody.

Lane1 : HEK293T whole cell lysate

Lane2 : HEK293T treated with Etoposide(20ng/ml) for 15 minutes whole cell lysate

Lane3 : HEK293T treated with Etoposide(20ng/ml) for 6 hours whole cell lysate

Dilution : 1:500



For full product information, images and publications, please visit our [website](https://www.genetex.com).