

Claudin 7 antibody

Cat. No. GTX66616

Host	Rabbit
Clonality	Polyclonal
Isotype	IgG
Application	WB, IHC-P, IP
Reactivity	Human, Mouse, Rat

Package
100 µl

APPLICATION

Application Note

*Optimal dilutions/concentrations should be determined by the researcher.

Suggested dilution	Recommended dilution
WB	1:500-1:1000
IHC-P	1:50-1:200
IP	1:50-1:200

Not tested in other applications.

Calculated MW 22 kDa. ([Note](#))

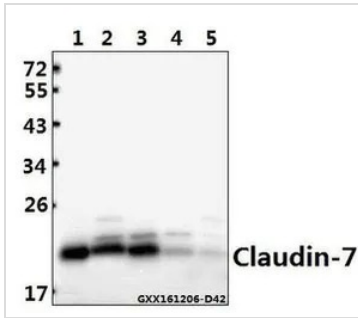
PROPERTIES

Form	Liquid
Buffer	PBS
Preservative	0.05% Sodium azide
Storage	Store as concentrated solution. Centrifuge briefly prior to opening vial. For short-term storage (1-2 weeks), store at 4°C. For long-term storage, aliquot and store at -20°C or below. Avoid multiple freeze-thaw cycles.
Concentration	1 mg/ml (Please refer to the vial label for the specific concentration.)
Immunogen	Synthetic peptide, corresponding to amino acids 171-220 of Human Claudin-7.
Purification	Purified by antigen-affinity chromatography From serum
Purity	> 95% (by SDS-PAGE)
Conjugation	Unconjugated
Note	For In vitro laboratory use only. Not for any clinical, therapeutic, or diagnostic use in humans or animals. Not for animal or human consumption.



For full product information, images and publications, please visit our [website](#).

DATA IMAGES



GTX66616 WB Image

WB analysis of various samples using GTX66616 Claudin 7 antibody.

Lane1 : HCC827 whole cell lysate(40ug)

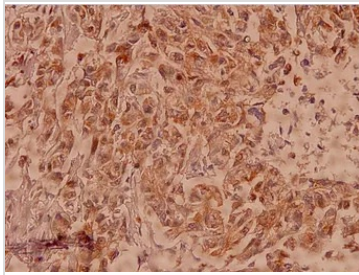
Lane2 : The Lung tissue lysate of Mouse(40ug)

Lane3 : The Lung tissue lysate of Rat(40ug)

Lane4 : A549 whole cell lysate(40ug)

Lane5 : L02 whole cell lysate(40ug)

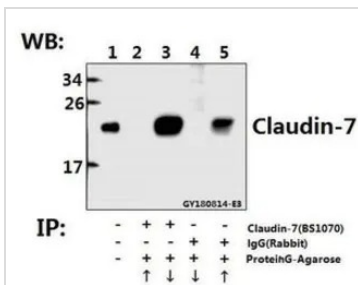
Dilution : 1:500



GTX66616 IHC-P Image

IHC-P analysis of human breast carcinoma tissue using GTX66616 Claudin 7 antibody.

Dilution : 1:100



GTX66616 IP Image

IP analysis of HeLa cell lysate using GTX66616 Claudin 7 antibody (Lane 2 and 3) and nonspecific IgG control antibody (Lane 4 and 5) compared to the input control (Lane 1).

Upward arrow : supernatant

Downward arrow : Immunoprecipitants



For full product information, images and publications, please visit our [website](https://www.genetex.com).