

Cyclin E1 antibody

Cat. No. GTX66618

Host	Rabbit
Clonality	Polyclonal
Isotype	IgG
Applications	WB, IHC-P
Reactivity	Human, Mouse, Rat

Package
100 µl

Applications

Application Note

*Optimal dilutions/concentrations should be determined by the researcher.

Suggested dilution	Recommended dilution
WB	Assay dependent
IHC-P	1:50-1:200

Not tested in other applications.

Calculated MW 47 kDa. ([Note](#))

Properties

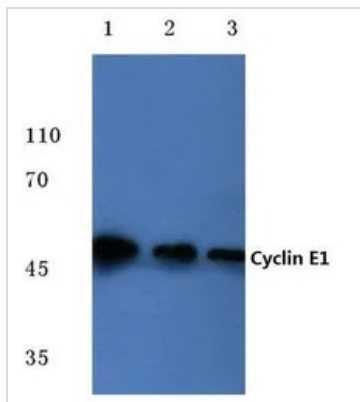
Form	Liquid
Buffer	PBS
Preservative	0.05% Sodium azide
Storage	Store as concentrated solution. Centrifuge briefly prior to opening vial. For short-term storage (1-2 weeks), store at 4°C. For long-term storage, aliquot and store at -20°C or below. Avoid multiple freeze-thaw cycles.
Concentration	1 mg/ml (Please refer to the vial label for the specific concentration.)
Immunogen	Synthetic peptide, corresponding to amino acids 360-400 of Human Cyclin E1.
Purification	Purified by antigen-affinity chromatography From serum
Purity	> 95% (by SDS-PAGE)
Conjugation	Unconjugated
Note	For In vitro laboratory use only. Not for any clinical, therapeutic, or diagnostic use in humans or animals. Not for animal or human consumption.



For full product information, images and publications, please visit our [website](#).

Date 2026 / 01 / 11 Page 1 of 2

DATA IMAGES



GTX66618 WB Image

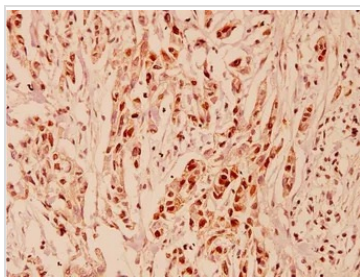
WB analysis of various samples using GTX66618 Cyclin E1 antibody.

Lane1 : MCF-7 cell lysate

Lane2 : Mouse liver tissue lysate

Lane3 : Rat kidney tissue lysate

Dilution : 1:500



GTX66618 IHC-P Image

IHC-P analysis of human breast carcinoma tissue using GTX66618 Cyclin E1 antibody.

Dilution : 1:100



For full product information, images and publications, please visit our [website](https://www.genetex.com).