

# TRADD antibody

**Cat. No. GTX66633**

<b>Host</b>	Rabbit
<b>Clonality</b>	Polyclonal
<b>Isotype</b>	IgG
<b>Application</b>	WB, IHC-P
<b>Reactivity</b>	Human, Mouse, Rat

**Package**  
100 µl

## APPLICATION

### Application Note

\*Optimal dilutions/concentrations should be determined by the researcher.

Suggested dilution	Recommended dilution
WB	1:500-1:1000
IHC-P	1:50-1:200

Not tested in other applications.

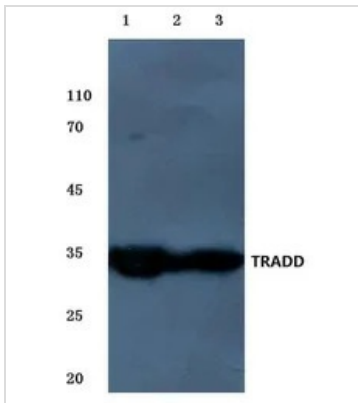
**Calculated MW** 34 kDa. ( [Note](#) )

## PROPERTIES

<b>Form</b>	Liquid
<b>Buffer</b>	PBS
<b>Preservative</b>	15mM Sodium azide
<b>Storage</b>	Store as concentrated solution. Centrifuge briefly prior to opening vial. For short-term storage (1-2 weeks), store at 4°C. For long-term storage, aliquot and store at -20°C or below. Avoid multiple freeze-thaw cycles.
<b>Concentration</b>	1 mg/ml (Please refer to the vial label for the specific concentration.)
<b>Immunogen</b>	Synthetic peptide, corresponding to amino acids 250-304 of Human TRADD.
<b>Purification</b>	Purified by antigen-affinity chromatography From serum
<b>Purity</b>	> 95% (by SDS-PAGE)
<b>Conjugation</b>	Unconjugated
<b>Note</b>	For In vitro laboratory use only. Not for any clinical, therapeutic, or diagnostic use in humans or animals. Not for animal or human consumption.



For full product information, images and publications, please visit our [website](#).

**DATA IMAGES**

**GTX66633 WB Image**

WB analysis of various samples using GTX66633 TRADD antibody.

Lane1 : PC12 whole cell lysate(20ug)

Lane2 : AML-12 whole cell lysate(20ug)

Lane3 : MCF-7 whole cell lysate(40ug)

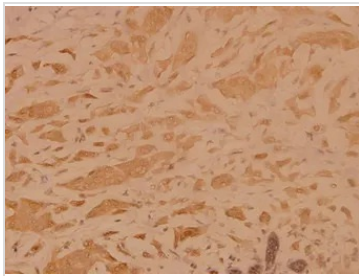
Lane4 : HEK293T whole cell lysate(40ug)

Lane5 : U-87MG whole cell lysate(40ug)

Lane6 : HepG2 whole cell lysate(40ug)

Lane7 : Hela whole cell lysate(40ug)

Dilution : 1:500


**GTX66633 IHC-P Image**

IHC-P analysis of human breast carcinoma tissue using GTX66633 TRADD antibody.

Dilution : 1:100



For full product information, images and publications, please visit our [website](https://www.genetex.com).