

TPH1 antibody

Cat. No. GTX66644

Host	Rabbit
Clonality	Polyclonal
Isotype	IgG
Applications	WB, IHC-P
Reactivity	Human

Package
100 µl

Applications

Application Note

*Optimal dilutions/concentrations should be determined by the researcher.

Suggested dilution	Recommended dilution
WB	1:500-1:1000
IHC-P	1:50-1:200

Not tested in other applications.

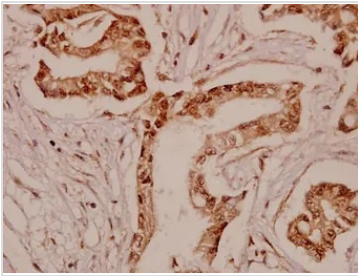
Calculated MW 51 kDa. ([Note](#))

Properties

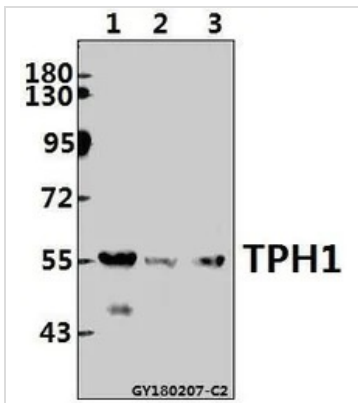
Form	Liquid
Buffer	PBS
Preservative	0.05% Sodium azide
Storage	Store as concentrated solution. Centrifuge briefly prior to opening vial. For short-term storage (1-2 weeks), store at 4°C. For long-term storage, aliquot and store at -20°C or below. Avoid multiple freeze-thaw cycles.
Concentration	1 mg/ml (Please refer to the vial label for the specific concentration.)
Immunogen	Synthetic peptide, corresponding to amino acids 20-70 of Human TPH1.
Purification	Purified by antigen-affinity chromatography From serum
Purity	> 95% (by SDS-PAGE)
Conjugation	Unconjugated
Note	For In vitro laboratory use only. Not for any clinical, therapeutic, or diagnostic use in humans or animals. Not for animal or human consumption.



For full product information, images and publications, please visit our [website](#).

DATA IMAGES

GTX66644 IHC-P Image

IHC-P analysis of human breast carcinoma tissue using GTX66644 TPH1 antibody.
Dilution : 1:50


GTX66644 WB Image

WB analysis of various samples using GTX66644 TPH1 antibody.
Lane1 : HEK293T whole cell lysate(40ug)
Lane2 : MCF-7 whole cell lysate(40ug)
Lane3 : A549 whole cell lysate(40ug)
Dilution : 1:500



For full product information, images and publications, please visit our [website](#).