

TEL antibody

Cat. No. GTX66653

Host	Rabbit
Clonality	Polyclonal
Isotype	IgG
Applications	WB
Reactivity	Human, Mouse, Rat

Package
100 µl

Applications

Application Note

*Optimal dilutions/concentrations should be determined by the researcher.

Suggested dilution	Recommended dilution
WB	Assay dependent
Not tested in other applications.	

Calculated MW 53 kDa. ([Note](#))

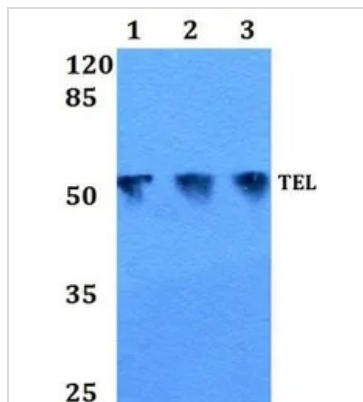
Properties

Form	Liquid
Buffer	PBS
Preservative	0.05% Sodium azide
Storage	Store as concentrated solution. Centrifuge briefly prior to opening vial. For short-term storage (1-2 weeks), store at 4°C. For long-term storage, aliquot and store at -20°C or below. Avoid multiple freeze-thaw cycles.
Concentration	1 mg/ml (Please refer to the vial label for the specific concentration.)
Immunogen	Synthetic peptide, corresponding to amino acids 380-430 of Human TEL.
Purification	Purified by antigen-affinity chromatography From serum
Purity	> 95% (by SDS-PAGE)
Conjugation	Unconjugated
Note	For In vitro laboratory use only. Not for any clinical, therapeutic, or diagnostic use in humans or animals. Not for animal or human consumption.



For full product information, images and publications, please visit our [website](#).

DATA IMAGES



GTX66653 WB Image

WB analysis of various samples using GTX66653 TEL antibody.

Lane1 : HEK293T whole cell lysate

Lane2 : Raw264.7 whole cell lysate

Lane3 : PC12 whole cell lysate

Dilution : 1:500



For full product information, images and publications, please visit our [website](#).