

# MED1 antibody

**Cat. No. GTX66658**

<b>Host</b>	Rabbit
<b>Clonality</b>	Polyclonal
<b>Isotype</b>	IgG
<b>Application</b>	WB, IHC-P
<b>Reactivity</b>	Human, Mouse, Rat

**Package**  
100 µl

## APPLICATION

### Application Note

\*Optimal dilutions/concentrations should be determined by the researcher.

Suggested dilution	Recommended dilution
WB	1:500-1:1000
IHC-P	1:50-1:200

Not tested in other applications.

**Calculated MW** 168 kDa. ([Note](#))

## PROPERTIES

<b>Form</b>	Liquid
<b>Buffer</b>	PBS
<b>Preservative</b>	0.05% Sodium azide
<b>Storage</b>	Store as concentrated solution. Centrifuge briefly prior to opening vial. For short-term storage (1-2 weeks), store at 4°C. For long-term storage, aliquot and store at -20°C or below. Avoid multiple freeze-thaw cycles.
<b>Concentration</b>	1 mg/ml (Please refer to the vial label for the specific concentration.)
<b>Immunogen</b>	Synthetic peptide, corresponding to amino acids 664-720 of Human TRAP220.
<b>Purification</b>	Purified by antigen-affinity chromatography From serum
<b>Purity</b>	> 95% (by SDS-PAGE)
<b>Conjugation</b>	Unconjugated
<b>Note</b>	For In vitro laboratory use only. Not for any clinical, therapeutic, or diagnostic use in humans or animals. Not for animal or human consumption.



For full product information, images and publications, please visit our [website](#).

## DATA IMAGES



### GTX66658 WB Image

WB analysis of various samples using GTX66658 MED1 antibody.

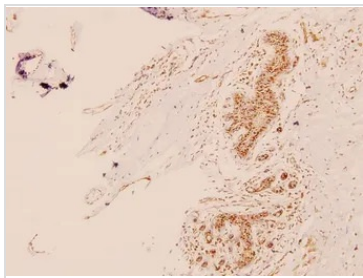
Lane1 : A549 whole cell lysate(40ug)

Lane2 : HEK293T whole cell lysate(40ug)

Lane3 : PC12 whole cell lysate(40ug)

Lane4 : CT26 whole cell lysate(40ug)

Dilution : 1:500



### GTX66658 IHC-P Image

IHC-P analysis of human breast carcinoma tissue using GTX66658 MED1 antibody.

Dilution : 1:100



For full product information, images and publications, please visit our [website](https://www.genetex.com).