

Galectin 7 antibody

Cat. No. GTX66682

Host	Rabbit
Clonality	Polyclonal
Isotype	IgG
Applications	WB, IHC-P
Reactivity	Human, Mouse, Rat

Package
100 µl

Applications

Application Note

*Optimal dilutions/concentrations should be determined by the researcher.

Suggested dilution	Recommended dilution
WB	Assay dependent
IHC-P	1:50-1:200

Not tested in other applications.

Calculated MW 15 kDa. ([Note](#))

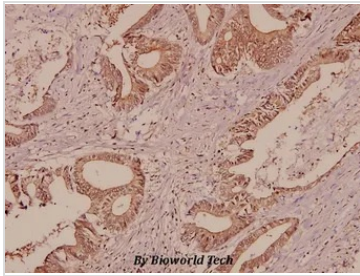
Properties

Form	Liquid
Buffer	PBS
Preservative	0.05% Sodium azide
Storage	Store as concentrated solution. Centrifuge briefly prior to opening vial. For short-term storage (1-2 weeks), store at 4°C. For long-term storage, aliquot and store at -20°C or below. Avoid multiple freeze-thaw cycles.
Concentration	1 mg/ml (Please refer to the vial label for the specific concentration.)
Immunogen	Synthetic peptide, corresponding to amino acids 50-100 of Human Galectin-7.
Purification	Purified by antigen-affinity chromatography From serum
Purity	> 95% (by SDS-PAGE)
Conjugation	Unconjugated
Note	For In vitro laboratory use only. Not for any clinical, therapeutic, or diagnostic use in humans or animals. Not for animal or human consumption.



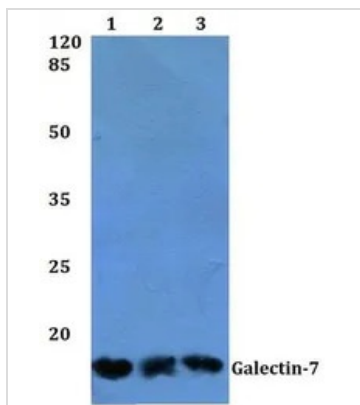
For full product information, images and publications, please visit our [website](#).

DATA IMAGES



GTX66682 IHC-P Image

IHC-P analysis of human colorectal carcinoma tissue using GTX66682 Galectin 7 antibody.
Dilution : 1:50



GTX66682 WB Image

WB analysis of various samples using GTX66682 Galectin 7 antibody.
Lane1 : HEK293T whole cell lysate
Lane2 : Raw264.7 whole cell lysate
Lane3 : H9C2 whole cell lysate
Dilution : 1:500



For full product information, images and publications, please visit our [website](https://www.genetex.com).