

## Histone H2B antibody

Cat. No. GTX66686

Host	Rabbit
Clonality	Polyclonal
Isotype	IgG
Application	WB, IHC-P
Reactivity	Human, Mouse, Rat

Package  
100 µl

## APPLICATION

## Application Note

\*Optimal dilutions/concentrations should be determined by the researcher.

Suggested dilution	Recommended dilution
WB	1:500-1:1000
IHC-P	1:50-1:200

Not tested in other applications.

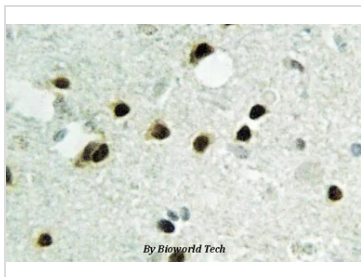
Calculated MW 14 kDa. ( [Note](#) )

## PROPERTIES

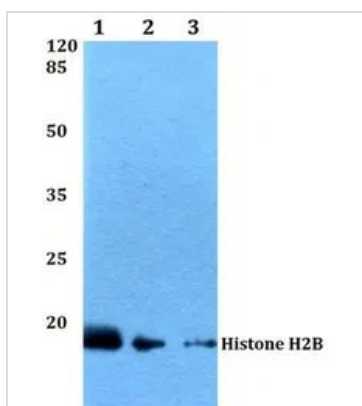
Form	Liquid
Buffer	PBS
Preservative	0.05% Sodium azide
Storage	Store as concentrated solution. Centrifuge briefly prior to opening vial. For short-term storage (1-2 weeks), store at 4°C. For long-term storage, aliquot and store at -20°C or below. Avoid multiple freeze-thaw cycles.
Concentration	1 mg/ml (Please refer to the vial label for the specific concentration.)
Immunogen	Synthetic peptide, corresponding to the N-terminal of Human Histone H2B.
Purification	Purified by antigen-affinity chromatography From serum
Purity	> 95% (by SDS-PAGE)
Conjugation	Unconjugated
Note	For In vitro laboratory use only. Not for any clinical, therapeutic, or diagnostic use in humans or animals. Not for animal or human consumption.



For full product information, images and publications, please visit our [website](#).

**DATA IMAGES**

**GTX66686 IHC-P Image**

IHC-P analysis of human brain tissue using GTX66686 Histone H2B antibody.


**GTX66686 WB Image**

WB analysis of various samples using GTX66686 Histone H2B antibody.

Lane1 : Hela whole cell lysate

Lane2 : Raw264.7 whole cell lysate

Lane3 : PC12 whole cell lysate

Dilution : 1:500



For full product information, images and publications, please visit our [website](https://www.genetex.com).