

## CRF antibody

**Cat. No. GTX66703**

<b>Host</b>	Rabbit
<b>Clonality</b>	Polyclonal
<b>Isotype</b>	IgG
<b>Applications</b>	WB
<b>Reactivity</b>	Human, Mouse, Rat

**Package**  
100 µl

## Applications

**Application Note**

\*Optimal dilutions/concentrations should be determined by the researcher.

Suggested dilution	Recommended dilution
WB	Assay dependent

Not tested in other applications.

**Calculated MW** 21 kDa. ( [Note](#) )

## Properties

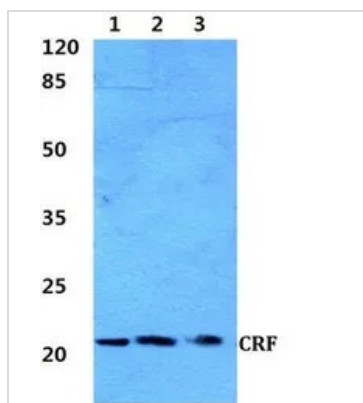
<b>Form</b>	Liquid
<b>Buffer</b>	PBS
<b>Preservative</b>	0.05% Sodium azide
<b>Storage</b>	Store as concentrated solution. Centrifuge briefly prior to opening vial. For short-term storage (1-2 weeks), store at 4°C. For long-term storage, aliquot and store at -20°C or below. Avoid multiple freeze-thaw cycles.
<b>Concentration</b>	1 mg/ml (Please refer to the vial label for the specific concentration.)
<b>Immunogen</b>	Synthetic peptide, corresponding to amino acids 121-170 of Human CRF.
<b>Purification</b>	Purified by antigen-affinity chromatography From serum
<b>Purity</b>	> 95% (by SDS-PAGE)
<b>Conjugation</b>	Unconjugated
<b>Note</b>	For In vitro laboratory use only. Not for any clinical, therapeutic, or diagnostic use in humans or animals. Not for animal or human consumption.



For full product information, images and publications, please visit our [website](#).

Date 2025 / 05 / 12 Page 1 of 2

## DATA IMAGES



### GTX66703 WB Image

WB analysis of various samples using GTX66703 CRF antibody.

Lane1 : MCF-7 cell lysate

Lane2 : Mouse spleen tissue lysate

Lane3 : Rat spleen tissue lysate

Dilution : 1:500



For full product information, images and publications, please visit our [website](https://www.genetex.com).