

IL12A / IL12 p35 antibody

Cat. No. GTX66715

Host	Rabbit
Clonality	Polyclonal
Isotype	IgG
Applications	IHC-P
Reactivity	Human

Package
100 µl

Applications

Application Note

*Optimal dilutions/concentrations should be determined by the researcher.

Suggested dilution	Recommended dilution
IHC-P	1:50-1:200

Not tested in other applications.

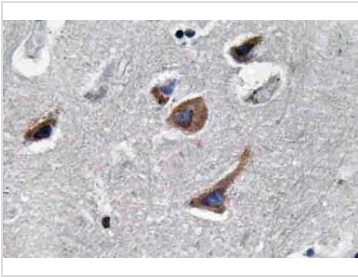
Properties

Form	Liquid
Buffer	PBS
Preservative	0.05% Sodium azide
Storage	Store as concentrated solution. Centrifuge briefly prior to opening vial. For short-term storage (1-2 weeks), store at 4°C. For long-term storage, aliquot and store at -20°C or below. Avoid multiple freeze-thaw cycles.
Concentration	1 mg/ml (Please refer to the vial label for the specific concentration.)
Immunogen	Synthetic peptide, corresponding to amino acids 32-81 of Human IL-12A.
Purification	Purified by antigen-affinity chromatography From serum
Purity	> 95% (by SDS-PAGE)
Conjugation	Unconjugated
Note	For In vitro laboratory use only. Not for any clinical, therapeutic, or diagnostic use in humans or animals. Not for animal or human consumption.



For full product information, images and publications, please visit our [website](#).

DATA IMAGES

**GTX66715 IHC-P Image**

IHC-P analysis of human brain tissue using GTX66715 IL12A / IL12 p35 antibody.



For full product information, images and publications, please visit our [website](#).