

# Cytochrome P450 2D6 antibody

**Cat. No. GTX66735**

<b>Host</b>	Rabbit
<b>Clonality</b>	Polyclonal
<b>Isotype</b>	IgG
<b>Applications</b>	WB
<b>Reactivity</b>	Human, Mouse, Rat

**Package**  
100 µl

## Applications

### Application Note

\*Optimal dilutions/concentrations should be determined by the researcher.

Suggested dilution	Recommended dilution
WB	1:500-1:1000
Not tested in other applications.	

**Calculated MW** 56 kDa. ( [Note](#) )

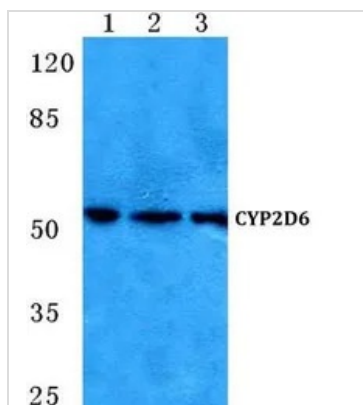
## Properties

<b>Form</b>	Liquid
<b>Buffer</b>	PBS
<b>Preservative</b>	0.05% Sodium azide
<b>Storage</b>	Store as concentrated solution. Centrifuge briefly prior to opening vial. For short-term storage (1-2 weeks), store at 4°C. For long-term storage, aliquot and store at -20°C or below. Avoid multiple freeze-thaw cycles.
<b>Concentration</b>	1 mg/ml (Please refer to the vial label for the specific concentration.)
<b>Immunogen</b>	Synthetic peptide, corresponding to amino acids 283-328 of Human CYP2D6.
<b>Purification</b>	Purified by antigen-affinity chromatography From serum
<b>Purity</b>	> 95% (by SDS-PAGE)
<b>Conjugation</b>	Unconjugated
<b>Note</b>	For In vitro laboratory use only. Not for any clinical, therapeutic, or diagnostic use in humans or animals. Not for animal or human consumption.



For full product information, images and publications, please visit our [website](#).

## DATA IMAGES



### GTX66735 WB Image

WB analysis of various samples using GTX66735 Cytochrome P450 2D6 antibody.

Lane1 : MCF-7 cell lysate

Lane2 : NIH-3T3 cell lysate

Lane3 : H9C2 cell lysate

Dilution : 1:500



For full product information, images and publications, please visit our [website](https://www.genetex.com).