

FPR1 antibody

Cat. No. GTX66739

| | |
|---------------------|-------------------|
| Host | Rabbit |
| Clonality | Polyclonal |
| Isotype | IgG |
| Applications | WB |
| Reactivity | Human, Mouse, Rat |

Package
100 µl

Applications

Application Note

*Optimal dilutions/concentrations should be determined by the researcher.

| Suggested dilution | Recommended dilution |
|--------------------|----------------------|
| WB | 1:500-1:1000 |

Not tested in other applications.

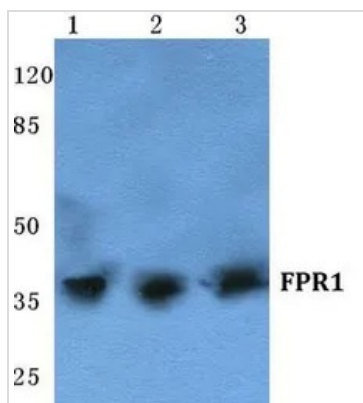
Calculated MW 38 kDa. ([Note](#))

Properties

| | |
|----------------------|--|
| Form | Liquid |
| Buffer | PBS, 50% Glycerol |
| Preservative | 0.1% Sodium azide |
| Storage | Store as concentrated solution. Centrifuge briefly prior to opening vial. For short-term storage (1-2 weeks), store at 4°C. For long-term storage, aliquot and store at -20°C or below. Avoid multiple freeze-thaw cycles. |
| Concentration | 1 mg/ml (Please refer to the vial label for the specific concentration.) |
| Immunogen | Synthetic peptide, corresponding to the 203-248 of Human FPR1. |
| Purification | Purified by antigen-affinity chromatography From serum |
| Purity | > 95% (by SDS-PAGE) |
| Conjugation | Unconjugated |
| Note | For In vitro laboratory use only. Not for any clinical, therapeutic, or diagnostic use in humans or animals. Not for animal or human consumption. |



For full product information, images and publications, please visit our [website](#).

DATA IMAGES

GTX66739 WB Image

WB analysis of various samples using GTX66739 FPR1 antibody.

Lane1 : A549 cell lysate

Lane2 : Raw264.7 cell lysate

Lane3 : Rat brain tissue lysate

Dilution : 1:500



For full product information, images and publications, please visit our [website](https://www.genetex.com).