

AICDA antibody

Cat. No. GTX66775

Host	Rabbit
Clonality	Polyclonal
Isotype	IgG
Applications	WB
Reactivity	Human, Mouse, Rat

Package
100 µl

Applications

Application Note

*Optimal dilutions/concentrations should be determined by the researcher.

Suggested dilution	Recommended dilution
WB	1:500-1:1000

Not tested in other applications.

Calculated MW 24 kDa. ([Note](#))

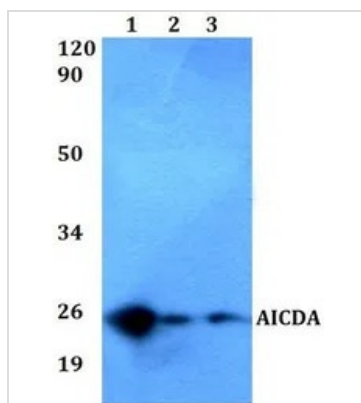
Properties

Form	Liquid
Buffer	PBS
Preservative	15mM Sodium azide
Storage	Store as concentrated solution. Centrifuge briefly prior to opening vial. For short-term storage (1-2 weeks), store at 4°C. For long-term storage, aliquot and store at -20°C or below. Avoid multiple freeze-thaw cycles.
Concentration	1 mg/ml (Please refer to the vial label for the specific concentration.)
Immunogen	A synthetic peptide corresponding to residues in Human AICDA
Purification	Purified by antigen-affinity chromatography From serum
Purity	> 95% (by SDS-PAGE)
Conjugation	Unconjugated
Note	For In vitro laboratory use only. Not for any clinical, therapeutic, or diagnostic use in humans or animals. Not for animal or human consumption.



For full product information, images and publications, please visit our [website](#).

DATA IMAGES



GTX66775 WB Image

WB analysis of various samples using GTX66775 AICDA antibody.

Lane1 : MCF-7 whole cell lysate

Lane2 : sp2/0 whole cell lysate

Lane3 : PC12 whole cell lysate

Dilution : 1:500



For full product information, images and publications, please visit our [website](#).