

## ZNF600 antibody

**Cat. No. GTX66805**

<b>Host</b>	Rabbit
<b>Clonality</b>	Polyclonal
<b>Isotype</b>	IgG
<b>Applications</b>	WB
<b>Reactivity</b>	Human, Mouse, Rat

**Package**  
100 µl

## Applications

**Application Note**

\*Optimal dilutions/concentrations should be determined by the researcher.

Suggested dilution	Recommended dilution
WB	1:500-1:1000

Not tested in other applications.

**Calculated MW** 83 kDa. ( [Note](#) )

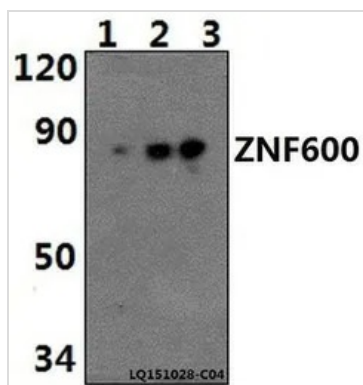
## Properties

<b>Form</b>	Liquid
<b>Buffer</b>	PBS
<b>Preservative</b>	0.05% Sodium azide
<b>Storage</b>	Store as concentrated solution. Centrifuge briefly prior to opening vial. For short-term storage (1-2 weeks), store at 4°C. For long-term storage, aliquot and store at -20°C or below. Avoid multiple freeze-thaw cycles.
<b>Concentration</b>	1 mg/ml (Please refer to the vial label for the specific concentration.)
<b>Immunogen</b>	Synthetic peptide, corresponding to amino acids 253-298 of Human ZNF600.
<b>Purification</b>	Purified by antigen-affinity chromatography From serum
<b>Purity</b>	> 95% (by SDS-PAGE)
<b>Conjugation</b>	Unconjugated
<b>Note</b>	For In vitro laboratory use only. Not for any clinical, therapeutic, or diagnostic use in humans or animals. Not for animal or human consumption.



For full product information, images and publications, please visit our [website](#).

## DATA IMAGES



### GTX66805 WB Image

WB analysis of various samples using GTX66805 ZNF600 antibody.

Lane1 : MCF-7 whole cell lysate(40ug)

Lane2 : H9C2 whole cell lysate(40ug)

Lane3 : RAW264.7 whole cell lysate(40ug)

Dilution : 1:500



For full product information, images and publications, please visit our [website](https://www.genetex.com).