

LAMP2 antibody

Cat. No. GTX66812

Host	Rabbit
Clonality	Polyclonal
Isotype	IgG
Application	WB
Reactivity	Human, Mouse, Rat

Package
100 µl

APPLICATION

Application Note

*Optimal dilutions/concentrations should be determined by the researcher.

Suggested dilution	Recommended dilution
WB	1:500-1:1000
Not tested in other applications.	

Calculated MW 45 kDa. ([Note](#))

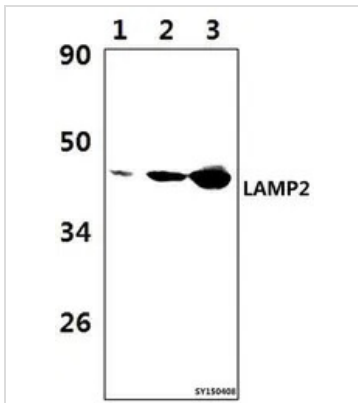
PROPERTIES

Form	Liquid
Buffer	PBS
Preservative	0.05% Sodium azide
Storage	Store as concentrated solution. Centrifuge briefly prior to opening vial. For short-term storage (1-2 weeks), store at 4°C. For long-term storage, aliquot and store at -20°C or below. Avoid multiple freeze-thaw cycles.
Concentration	1 mg/ml (Please refer to the vial label for the specific concentration.)
Immunogen	Synthetic peptide, corresponding to amino acids 89-134 of Human LAMP2.
Purification	Purified by antigen-affinity chromatography From serum
Purity	> 95% (by SDS-PAGE)
Conjugation	Unconjugated
Note	For In vitro laboratory use only. Not for any clinical, therapeutic, or diagnostic use in humans or animals. Not for animal or human consumption.



For full product information, images and publications, please visit our [website](#).

DATA IMAGES



GTX66812 WB Image

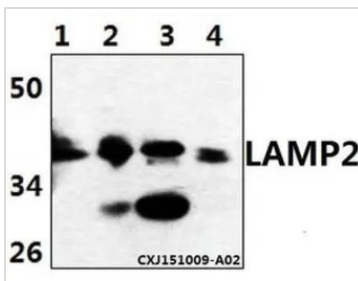
WB analysis of various samples using GTX66812 LAMP2 antibody.

Lane1 : A549 whole cell lysate (57µg)

Lane2 : The Lung tissue lysate of Rat (39µg)

Lane3 : The Lung tissue lysate of Mouse (39µg)

Dilution : 1:1000



GTX66812 WB Image

WB analysis of various samples using GTX66812 LAMP2 antibody.

Lane1 : L02 whole cell lysate(40ug)

Lane2 : Jurkat whole cell lysate(40ug)

Lane3 : The intestines tissue lysate of Mouse(30ug)

Lane4 : The intestines tissue lysate of Rat(30ug)

Dilution : 1:500



For full product information, images and publications, please visit our [website](https://www.genetex.com).