

SUMO2 antibody

Cat. No. GTX66829

Host	Rabbit
Clonality	Polyclonal
Isotype	IgG
Applications	WB, IP
Reactivity	Human, Mouse, Rat

Package
100 µl

Applications

Application Note

*Optimal dilutions/concentrations should be determined by the researcher.

Suggested dilution	Recommended dilution
WB	1:500-1:1000
IP	1:50-1:200

Not tested in other applications.

Calculated MW 11 kDa. ([Note](#))

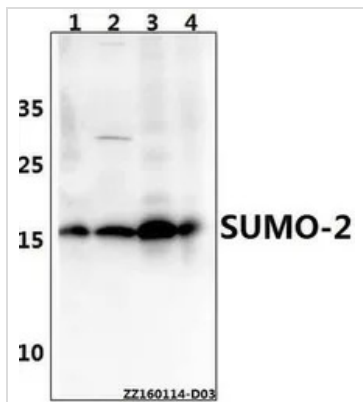
Properties

Form	Liquid
Buffer	PBS, 50% Glycerol
Preservative	0.1% Sodium azide
Storage	Store as concentrated solution. Centrifuge briefly prior to opening vial. For short-term storage (1-2 weeks), store at 4°C. For long-term storage, aliquot and store at -20°C or below. Avoid multiple freeze-thaw cycles.
Concentration	1 mg/ml (Please refer to the vial label for the specific concentration.)
Immunogen	Synthetic peptide, corresponding to amino acids 60-110 of Human SUMO-2.
Purification	Purified by antigen-affinity chromatography From serum
Purity	> 95% (by SDS-PAGE)
Conjugation	Unconjugated
Note	For In vitro laboratory use only. Not for any clinical, therapeutic, or diagnostic use in humans or animals. Not for animal or human consumption.



For full product information, images and publications, please visit our [website](#).

DATA IMAGES



GTX66829 WB Image

WB analysis of various samples using GTX66829 SUMO2 antibody.

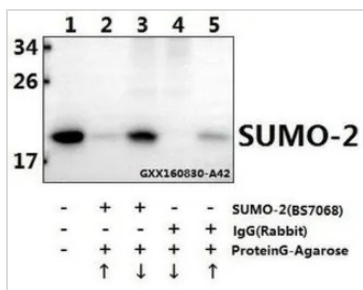
Lane1 : HeLa whole cell lysate(40ug)

Lane2 : NIH-3T3 whole cell lysate(40ug)

Lane3 : PC12 whole cell lysate(40ug)

Lane4 : HEK293T whole cell lysate(40ug)

Dilution : 1:500

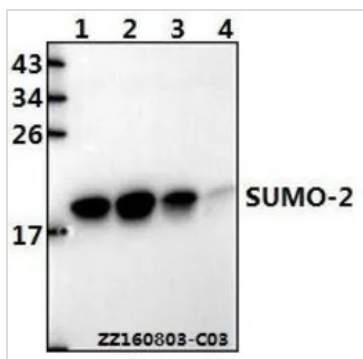


GTX66829 IP Image

IP analysis of PC12 cell lysate using GTX66829 SUMO2 antibody (Lane 2 and 3) and nonspecific IgG control antibody (Lane 4 and 5) compared to the input control (Lane 1).

Upward arrow : supernatant

Downward arrow : Immunoprecipitants



GTX66829 WB Image

WB analysis of various samples using GTX66829 SUMO2 antibody.

Lane1 : HeLa whole cell lysate(40ug)

Lane2 : HEK293T whole cell lysate(40ug)

Lane3 : PC12 whole cell lysate(40ug)

Lane4 : CT-26 whole cell lysate(40ug)

Dilution : 1:500



For full product information, images and publications, please visit our [website](#).