

# Ku80 antibody [8H1]

**Cat. No. GTX66843**

<b>Host</b>	Mouse
<b>Clonality</b>	Monoclonal
<b>Isotype</b>	IgG
<b>Applications</b>	WB, ICC/IF, IP
<b>Reactivity</b>	Human, Monkey

**Package**  
100 µl

## Applications

### Application Note

\*Optimal dilutions/concentrations should be determined by the researcher.

Suggested dilution	Recommended dilution
WB	1:1000
ICC/IF	1:100-500
IP	1:50-1:200

Not tested in other applications.

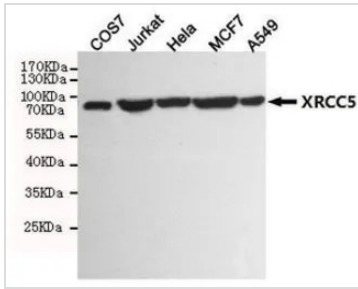
**Calculated MW** 83 kDa. ( [Note](#) )

## Properties

<b>Form</b>	Liquid
<b>Buffer</b>	100mM Tris-Glycine, 150mM NaCl, 50% Glycerol
<b>Preservative</b>	0.2% Sodium azide
<b>Storage</b>	Store as concentrated solution. Centrifuge briefly prior to opening vial. For short-term storage (1-2 weeks), store at 4°C. For long-term storage, aliquot and store at -20°C or below. Avoid multiple freeze-thaw cycles.
<b>Concentration</b>	Batch dependent (Please refer to the vial label for the specific concentration.)
<b>Immunogen</b>	Purified recombinant human XRCC5 protein fragments expressed in E.coli.
<b>Purification</b>	Purified by antigen-affinity chromatography
<b>Purity</b>	> 95% (by SDS-PAGE)
<b>Conjugation</b>	Unconjugated
<b>Note</b>	For In vitro laboratory use only. Not for any clinical, therapeutic, or diagnostic use in humans or animals. Not for animal or human consumption.

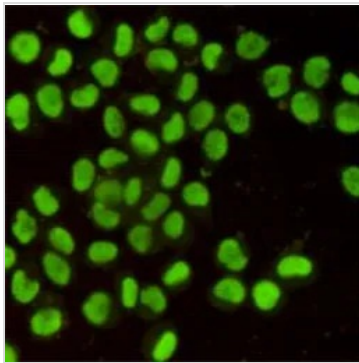


For full product information, images and publications, please visit our [website](#).

**DATA IMAGES**

**GTX66843 WB Image**

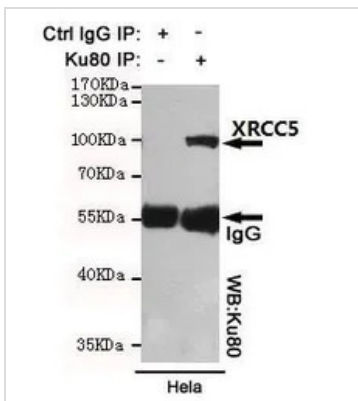
WB analysis of COS7, Jurkat, HeLa, MCF7, and A549 cell lysates using GTX66843 Ku80 antibody [8H1].

Dilution : 1:1000


**GTX66843 ICC/IF Image**

ICC/IF analysis of HeLa cells using GTX66843 Ku80 antibody [8H1].

Dilution : 1:400


**GTX66843 IP Image**

IP analysis of HeLa cell lysate using GTX66843 Ku80 antibody [8H1].



For full product information, images and publications, please visit our [website](https://www.genetex.com).