

Ku70 antibody [7B1]

Cat. No. GTX66844

Host	Mouse
Clonality	Monoclonal
Isotype	IgG
Applications	WB, ICC/IF, IP
Reactivity	Human, Monkey

Package
100 µl

Applications

Application Note

*Optimal dilutions/concentrations should be determined by the researcher.

Suggested dilution	Recommended dilution
WB	1:1000
ICC/IF	1:50-1:200
IP	1:50-1:200

Not tested in other applications.

Calculated MW 70 kDa. ([Note](#))

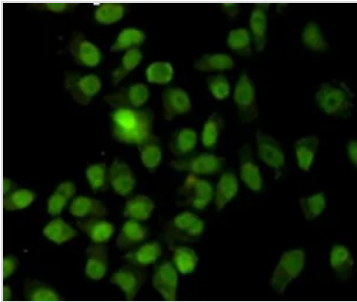
Properties

Form	Liquid
Buffer	100mM Tris-Glycine, 150mM NaCl, 50% Glycerol
Preservative	0.2% Sodium azide
Storage	Store as concentrated solution. Centrifuge briefly prior to opening vial. For short-term storage (1-2 weeks), store at 4°C. For long-term storage, aliquot and store at -20°C or below. Avoid multiple freeze-thaw cycles.
Concentration	Batch dependent (Please refer to the vial label for the specific concentration.)
Immunogen	Purified recombinant human Ku70 protein fragments expressed in E.coli.
Purification	Purified by antigen-affinity chromatography
Purity	> 95% (by SDS-PAGE)
Conjugation	Unconjugated
Note	For In vitro laboratory use only. Not for any clinical, therapeutic, or diagnostic use in humans or animals. Not for animal or human consumption.



For full product information, images and publications, please visit our [website](#).

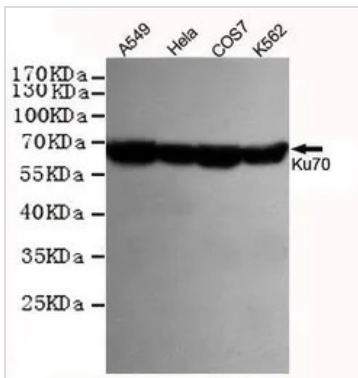
DATA IMAGES



GTX66844 ICC/IF Image

ICC/IF analysis of methanol-fixed HeLa cells using GTX66844 Ku70 antibody [7B1].

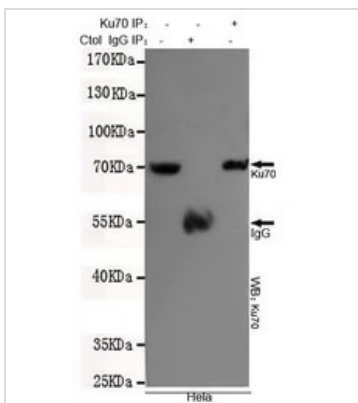
Dilution : 1:200



GTX66844 WB Image

WB analysis of HeLa, A549, COS7, and K562 cell lysates using GTX66844 Ku70 antibody [7B1].

Dilution : 1:1000



GTX66844 IP Image

IP analysis of HeLa cell lysate using GTX66844 Ku70 antibody [7B1].



For full product information, images and publications, please visit our [website](https://www.genetex.com).