

TWEAK antibody

Cat. No. GTX66870

Host	Rabbit
Clonality	Polyclonal
Isotype	IgG
Applications	WB, IHC-P
Reactivity	Human

Package
100 µl

Applications

Application Note

*Optimal dilutions/concentrations should be determined by the researcher.

Suggested dilution	Recommended dilution
WB	1:500-1:1000
IHC-P	1:50-1:200

Not tested in other applications.

Calculated MW 27 kDa. ([Note](#))

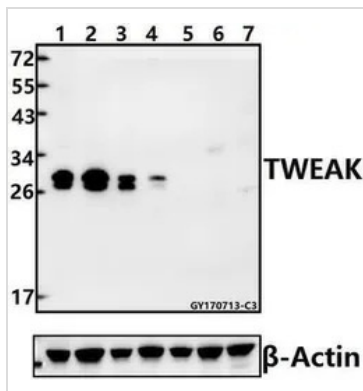
Properties

Form	Liquid
Buffer	PBS
Preservative	0.05% Sodium azide
Storage	Store as concentrated solution. Centrifuge briefly prior to opening vial. For short-term storage (1-2 weeks), store at 4°C. For long-term storage, aliquot and store at -20°C or below. Avoid multiple freeze-thaw cycles.
Concentration	1 mg/ml (Please refer to the vial label for the specific concentration.)
Immunogen	Synthetic peptide, corresponding to amino acids 51-100 of Human TWEAK.
Purification	Purified by antigen-affinity chromatography From serum
Purity	> 95% (by SDS-PAGE)
Conjugation	Unconjugated
Note	For In vitro laboratory use only. Not for any clinical, therapeutic, or diagnostic use in humans or animals. Not for animal or human consumption.



For full product information, images and publications, please visit our [website](#).

DATA IMAGES

**GTX66870 WB Image**

WB analysis of various samples using GTX66870 TWEAK antibody.

Lane1 : A549 whole cell lysate(40ug)

Lane2 : U-87MG whole cell lysate(40ug)

Lane3 : HEK293T whole cell lysate(40ug)

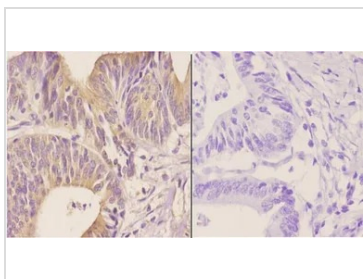
Lane4 : A2780 whole cell lysate(40ug)

Lane5 : SP2/0 whole cell lysate(40ug)

Lane6 : C6 whole cell lysate(40ug)

Lane7 : PC12 whole cell lysate(40ug)

Dilution : 1:500

**GTX66870 IHC-P Image**

IHC-P analysis of human colon carcinoma tissue using GTX66870 TWEAK antibody.

Left : Primary antibody

Right : Negative control

Dilution : 1:50



For full product information, images and publications, please visit our [website](#).