

SlyD protein (active)

Cat. No. GTX66883-pro

Applications Functional Assay**Species** E. coli**Package**

100 µg

Applications

Application Note

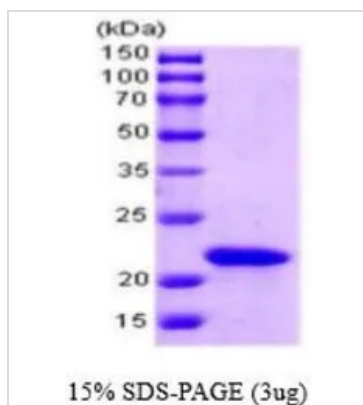
Specific activity is > 700 nmol/min/mg, and is defined as the amount of enzyme cleaves 1nmol of suc-AAFP-PNA per minute at 37°C in Tris-HCl (pH 8.0) using chymotrypsin.

Properties

Form Liquid**Buffer** 20mM Tris**Preservative** No preservatives**Storage** Store as concentrated solution. Centrifuge briefly prior to opening vial. For short-term storage (1-2 weeks), store at 4°C. For long-term storage, aliquot and store at -20°C or below. Avoid multiple freeze-thaw cycles.**Concentration** 1 mg/ml (Please refer to the vial label for the specific concentration.)**Region/Sequence** Length: 196 a.a. Sequence: MKVAKDLVVS LAYQVRTEDG VLVDESPVSA PLDYLHGHGS LISGLETALE GHEVGDKFDV
AVGANDAYGQ YDENLVQRVP KDVFMGVDEL QVGMRFLEET DQGPVPVEIT AVEDDHVVVD GNHMLAGQNL KFNVEVVAIR
EATEEELAHG HVHGAHDHHH DHDHDCGCGG HGHDHGHEHG GEGCCGGKGN GGCGCH**Expression System** E. coli**Purity** > 95% by SDS-PAGE.**Conjugation** Unconjugated**Note** For In vitro laboratory use only. Not for any clinical, therapeutic, or diagnostic use in humans or animals. Not for animal or human consumption.

For full product information, images and publications, please visit our [website](#).

DATA IMAGES



GTX66883-pro Image

3 μ g of GTX66883-pro SlyD protein (active) by SDS-PAGE under reducing condition and visualized by coomassie blue stain



For full product information, images and publications, please visit our [website](#).