

Thioredoxin 1 protein, His tag (active)

Cat. No. GTX66886-pro**Applications** Functional Assay**Species** E. coli**Package**

50 µg

Applications

Application Note

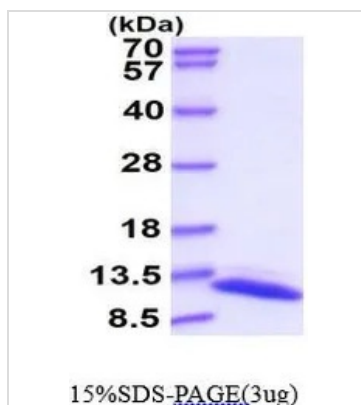
Specific activity is > 70 A650/cm/min/mg, obtained by measuring the increase of insulin precipitation in absorbance at 650 nm resulting from the reduction of insulin.

Properties

Form Liquid**Buffer** 20mM Tris-HCl, 10% Glycerol, 1mM DTT**Preservative** No preservatives**Storage** Store as concentrated solution. Centrifuge briefly prior to opening vial. For short-term storage (1-2 weeks), store at 4°C. For long-term storage, aliquot and store at -20°C or below. Avoid multiple freeze-thaw cycles.**Concentration** 0.5 mg/ml (Please refer to the vial label for the specific concentration.)**Region/Sequence** N-terminal His-Tag; Length: 117 a.a. Sequence: MHHHHHHMGS DKIIHLTDDS FDTDVLKADG AILVDFWAEW CGPCKMIAPILDEIADEYQG KLTVAKLNID QNPGTAPKYG IRGIPTLLLF KNGEVAATKV GALSKGQLKE FLDANLA**Expression System** E. coli**Purity** > 95% by SDS-PAGE.**Conjugation** Unconjugated**Note** For In vitro laboratory use only. Not for any clinical, therapeutic, or diagnostic use in humans or animals. Not for animal or human consumption.

For full product information, images and publications, please visit our [website](#).

DATA IMAGES



GTX66886-pro Image

3 μ g of GTX66886-pro Thioredoxin 1 protein (active) by SDS-PAGE under reducing condition and visualized by coomassie blue stain



For full product information, images and publications, please visit our [website](#).