

## Uridine phosphorypase protein, His tag (active)

Cat. No. GTX66887-pro

**Applications** Functional Assay**Species** E. coli**Package**

100 µg

## Applications

## Application Note

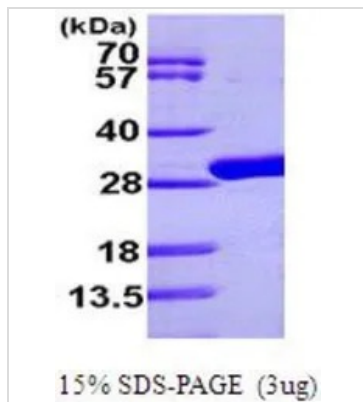
Specific activity is > 20000 pmol/min/µg, and is defined as the amount of enzyme that catalyze the reduction 1.0 pmole of uridine presence of phosphate per minute at pH 7.5 at 25°C.

## Properties

**Form** Liquid**Buffer** 20mM Tris-HCl, 50mM NaCl, 10% Glycerol, 1mM DTT**Preservative** No preservative**Storage** Store as concentrated solution. Centrifuge briefly prior to opening vial. For short-term storage (1-2 weeks), store at 4°C. For long-term storage, aliquot and store at -20°C or below. Avoid multiple freeze-thaw cycles.**Concentration** 1 mg/ml (Please refer to the vial label for the specific concentration.)**Region/Sequence** Full length protein, N-terminal His-Tag; Length: 273 a.a. Sequence: MGSSHHHHHH SSGLVPRGSH MSKSDVFHLG LTKNDLQGAT LAIVPGDPDR VEKIAALMDK PVKLASHREF TTWRAELDGK PVIVCSTGIG GPSTSIAVEE LAQLGIRTFI RIGTTGAIQP HINVGDLVT TASVRLDGAS LHFAPLEFPA VADFECTAL VEAASIGAT THVGVASSD TFYPGQERYD TYSGRVVRHF KGSMEEWQAM GVMNYEMESA TLLTMCASQG LRAGMVAGVI VNRTQQEIPN AETMKQTESH AVKIVVEAAR RLL**Expression System** E. coli**Purity** > 95% by SDS-PAGE.**Conjugation** Unconjugated**Note** For In vitro laboratory use only. Not for any clinical, therapeutic, or diagnostic use in humans or animals. Not for animal or human consumption.

For full product information, images and publications, please visit our [website](#).

## DATA IMAGES



### GTX66887-pro Image

3  $\mu$ g of GTX66887-pro Uridine phosphorylase protein (active) by SDS-PAGE under reducing condition and visualized by coomassie blue stain



For full product information, images and publications, please visit our [website](https://www.genetex.com).