

Malate dehydrogenase protein, His tag (active)

Cat. No. GTX66891-pro
Applications Functional Assay

Species E. coli

Package

100 µg

Applications

Application Note

Specific activity is > 1000 units/mg, and is defined as the amount of enzyme that cleaves 1.0 µmole of oxalacetate and beta-NADH to L-malate and beta-NAD per minute at pH 8.0 at 37°C.

Properties

Form Liquid

Buffer 20mM Tris-HCl, 50mM NaCl, 10% Glycerol, 1mM DTT

Preservative No preservatives

Storage Store as concentrated solution. Centrifuge briefly prior to opening vial. For short-term storage (1-2 weeks), store at 4°C. For long-term storage, aliquot and store at -20°C or below. Avoid multiple freeze-thaw cycles.

Concentration 1 mg/ml (Please refer to the vial label for the specific concentration.)

Region/Sequence

Full length protein, N-terminal His-Tag; Length: 336 a.a. Sequence: MGSSHHHHHH SSGLVPRGSH MGSHMKVAVL GAAGGIGQAL ALLLKTQLPS GSELSLYDIA PVTPGVAVDL SHIPTAVKIK GFSGEDATPA LEGADVLLIS AGVARKPGMD RSDLFNVNAG IVKNLVQQA KTCPKACIGI ITNPVNTTVA IAAEVLKKAG VYDKNKLFV TTDIIRSNT FVAELKGKQP GEVEVPVIGG HSGVTILPLL SQVPGVSFTE QEVADLT KRI QNAGTEVEA KAGGGSATLS MGQAAARFGL SLVRALQGEQ GWECAYVEG DGQYARFFSQ PLLLGKNGVE ERKSIGTSLA FEQNALEGML DTLKKDIALG EEVFNK

Expression System E. coli

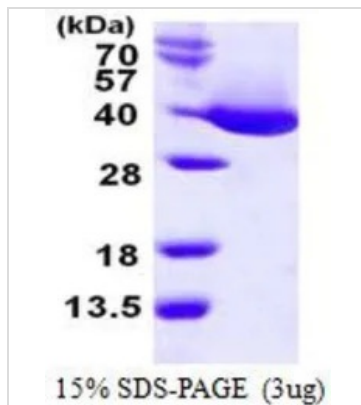
Purity > 95% by SDS-PAGE.

Conjugation Unconjugated

Note For In vitro laboratory use only. Not for any clinical, therapeutic, or diagnostic use in humans or animals. Not for animal or human consumption.


For full product information, images and publications, please visit our [website](#).

DATA IMAGES



GTX66891-pro Image

3 µg of GTX66891-pro Malate dehydrogenase protein (active) by SDS-PAGE under reducing condition and visualized by coomassie blue stain



For full product information, images and publications, please visit our [website](#).